



# Farmer Producer Organizations Resource Book

Madhya Pradesh Edition



Supported by



Published by:  
ACCESS Development Services  
22, Hauz Khas Village  
New Delhi 110016  
[www.accessdev.org](http://www.accessdev.org)

Designed by:  
Purple Communications  
C-381, First Floor,  
Sector-10, Noida,  
Gautam Bodh Nagar,  
UP 201301

Copyright ©: ACCESS Development Services, 2023  
All rights reserved. This book, or parts thereof, may not be reproduced in any form or by any means, electronic or mechanical, including photocopying, recording or any information storage and retrieval system now known or to be invented, without permission by the Publisher.

# About ACCESS

ACCESS Development Services is a national livelihoods support organization with a focus on incubating innovations for promoting sustainable livelihoods of the poor. Set up in March 2006 as a “not for profit” organization ACCESS is structured uniquely, to work at all levels of the value chain – implementing programs on the ground, working with the Government, Multilateral/ Bilateral agencies, Corporate Sector and Civil Society Organizations to improve and enhance their program implementation as also undertaking initiatives to support, inform and influence policies.

The core focus of ACCESS programmes is to strengthen the subsistence level livelihoods of small farmers or producers towards greater sustainability, largely through organizing them into Producer Companies, and enabling them to better access inputs, markets, finance and even entitlements and equip them to better negotiate in the marketplace.

Over the last decade and a half, ACCESS has emerged as the leader in Farmer Producer Company promotion, having promoted 176 FPCs across the country. Given its experiences in FPO promotion, ACCESS has been accredited as a Cluster Based Business Organization (CBBO) by all the leading apex institutions of the country viz., Small Farmers Agri Business Consortium (SFAC), National Bank of Agriculture and Rural Development (NABARD), National Cooperative Development Corporation (NCDC), National Agricultural Cooperative Marketing Federation of India Limited (NAFED), and is an active partner of all these organisations under the 10,000 FPO Scheme of the Government. Besides the Government, several corporate entities and foundations have also supported ACCESS’s FPO promotion programmes.



## Foreword

Agriculture continues to play an important role in the economy of the country with around 60% of the population depending on agriculture and allied activities as their primary income source. Around 86% of the operational land holdings in India are of Small and Marginal Farmers with an average landholding of less than 1 Ha which as an economic unit is less sustainable due to the larger transaction costs involved. This problem is further exacerbated by increasing fragmentation of landholdings, rising input costs, poor price realization of the produce and erratic weather patterns due to climate change. In this context, Farmer Producer Organizations (FPOs) as a tool to collectivize farmers is a boon, especially for small and marginal farmers as it helps them leverage the benefits of lower transaction costs associated with economies of scale and gives them better bargaining power across the agricultural value chain enabling them get better price realisation.

The Government's ambitious scheme of promoting 10,000 FPOs across India is a stepping stone towards empowering our farmers and achieving the target of doubling their incomes. One of the key strengths of ACCESS Development Services has been to promote, capacitate and support FPOs by actively partnering with the Government and the Corporates over the years. ACCESS has promoted FPOs on various commodity lines ranging from cereals, pulses, oilseeds, spices, fresh fruits and vegetables, based on detailed value chain studies and across geographies and agro-climatic regions. Under FPO promotion programmes, ACCESS's support covers most activities of the pre and post production stages such as productivity enhancement, effectiveness and efficiency in farming operations, access to better and improved inputs, aggregation, post-harvest management, primary processing, facilitating access to institutional credit, and access to remunerative markets, along





with standardised governance and management systems. ACCESS has promoted 176 FPOs across five states of Madhya Pradesh (MP), Odisha, Rajasthan, West Bengal, Andhra Pradesh and Telangana, and is engaged in strengthening 100 FPOs in Assam that have been promoted by other agencies. Going forward, ACCESS is committed to promoting more women led FPOs in MP as well as in other states.

In addition to promoting and strengthening FPOs, ACCESS has been active in supporting the policy and enabling ecosystem for growth of these collectives.

One of the most important breakthroughs for an FPO to become successful is for it to have the required partnerships and linkages – with market players including input supplies and buyers, technology providers and financing institutions. In view of supporting this, ACCESS is instituting the initiative of FPO Marketplace and Conclave at State level in Madhya Pradesh. This initiative supported by NABARD, MPSRLM and Walmart Foundation, aims to address the information asymmetry present in the existing ecosystem of agriculture markets making it more robust and efficient, and bringing the market players and other stakeholders closer to the FPOs. This will further our collective objective of empowering and capacitating our FPOs to become sustainable business entities with the ultimate aim of benefiting our farmer members. The event aims to showcase the strength of the FPO movement in the state and attract more stakeholders to partner with these institutions and create new business models that benefit the farmers and FPOs.

Aligned to the FPO Marketplace initiative, ACCESS is bringing out this FPO Resource Book for MP which will act as a reference for stakeholders in the FPO ecosystem space in the state helping them assess the current status of FPOs and strategize for future interventions and FPO partnerships.

Radhika Agashe  
Executive Director



## Message



FPOs are gradually claiming their role in the Agriculture value chain. They are aimed to be the one stop solution for all sorts of farming needs. Madhya Pradesh- Deen Dayal Antyodaya Yojana State Rural Livelihoods Mission (MP DAY SRLM) has seen and supported the development of the FPO concept since the start. MP SRLM has promoted 88 FPCs and out of them 77 are women only. FPOs up to some extent have started contributing in the agriculture value chain as input service providers but output marketing is still a big challenge. Women participation in FPOs can be a game changer for FPO sustainability. To achieve sustainable business these FPOs must get proper exposure to market functionaries such as traders, finance agencies, insurance providers, warehousing companies etc. Also, these market functionaries should also get the knowledge of FPOs capability. FPO Resource Book can be proved as a potential tool to address these challenges. I congratulate ACCESS for this initiative.”

L M Belwal,  
CEO  
MP-DAY SRLM



## Message



FPOs enable collectivisation of farmers as a viable solution to address many issues that agriculture sector faces today in India including access to markets. FPOs are gradually becoming part of the Agriculture value chain. This is important as it will boost economies of scale and enhance small & marginal farmer's income through market access. FPO resource book is a good initiative which shows FPOs capability to deliver services to farmers and handle diverse businesses. FPO resource book shall give exposure of FPOs capacity to institutional buyers which in future can convert in transactional business relationships.”

In Madhya Pradesh, there are more than 850 FPOs of which NABARD's initiatives have resulted in promotion of 398 FPOs under various schemes of NABARD and also Central Sector Scheme of GoI.

FPOs besides main stream agriculture, have adopted various activities such as Dairy, Fisheries, Oil seeds, Vegetables, Jaggery, Honey and Millets to name a few. Moving a step forward, FPOs are now involved in primary & secondary processing, value additions throughout the value chain to tap better prices and market potential. It has always been NABARD's endeavour to provide better resources to FPOs in the form of capacity building, handholding of BoDs, value additions of the produce, facilitating backward & forward linkages and other services to upscale the activities of the FPOs and make them independent and function as Farmer Producer Company.

As a part of one such initiative, I am happy that NABARD Madhya Pradesh Regional Office is associating with ACCESS Development Services to organise this buyer Seller Meet. I am sure that this initiative will fulfil its objective of providing good exposure to FPOs besides giving them a platform to meet the seller and buyers in Agri commodities and discuss future prospects.

Nirupam Mehrotra  
Chief General Manager  
NABARD Regional Office,  
Madhya Pradesh



## Farmer Producer Companies

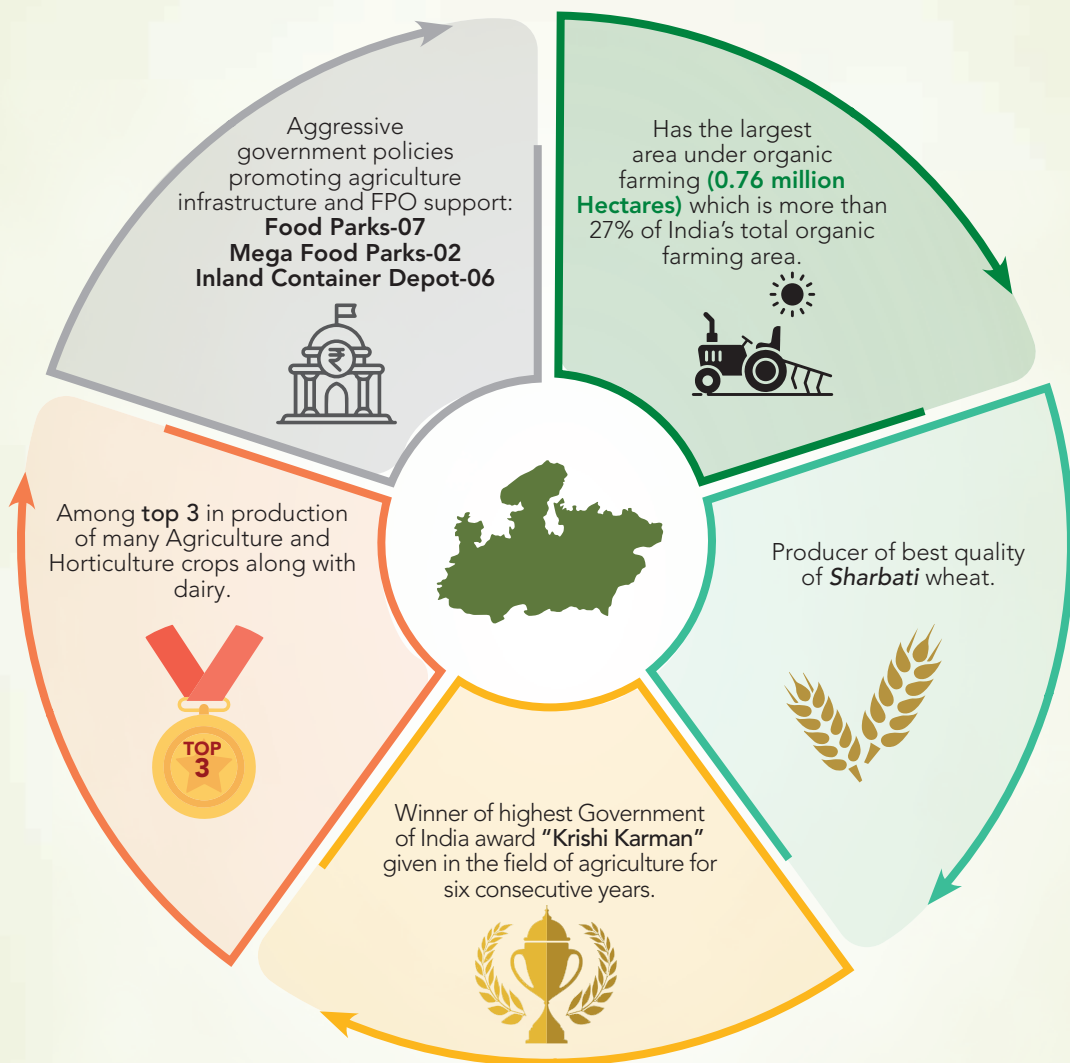
According to Census 2011, there are about 2630 lakh agricultural workers in the country, including both main and marginal workers. Eighty-seven percent of the agricultural households in India are small and marginal producers, cultivating small plots which generate low returns. Farmers had primarily focused on production rather than on marketing and in this growing and competitive economy it has exposed them to many market biases because of their scale of functioning and lack of market exposure. High transaction costs, lack of market knowledge and negotiation, lack of credit to name a few.

Producer collectives are increasingly being seen as a means for improving the economic situation of small and marginal producers and to help address the many challenges in agriculture sector but most importantly, improved access to investments, technology and inputs and markets. The aim is to enhance farmers' competitiveness and increase their advantage in emerging market opportunities. Collectivisation also helps bring scale advantages through bulk purchase of inputs, exchange of knowledge and information among members, cost efficiencies in value-addition and marketing, better price realization through aggregation and value addition, and risk reduction

A farmer producer organisation or company registered under the special provisions of the Companies Act, 1956 is considered as the most appropriate institutional form around which to mobilize farmers and build their capacity to collectively leverage their production and marketing strength. The concept of FPO promotion is now implemented by almost all State Governments in collaboration with the Central Government.



# Madhya Pradesh - Progress in Agriculture



# Agricultural Footprint: National Level

Madhya Pradesh's share in National agriculture production

Crops	All India position	% share
Crop Groups		
Nutri/Course Cereals	Fourth	9.06%
Total Pulses	First	20.60%
Total Food Grains	Second	10.36%
Total Oilseeds	Third	18.50%
Individual Crops		
Maize	Second	11.37%
Wheat	Second	16.08%
Soyabean	Second	35.78%
Mustard/rapeseed	Second	12.98%
Tur	Sixth	5.98%
Gram	First	26.09%
Lentil	First	40.89%

Source- Agriculture statistics 2021 third advance estimates





# Horticulture: Reaching New Heights

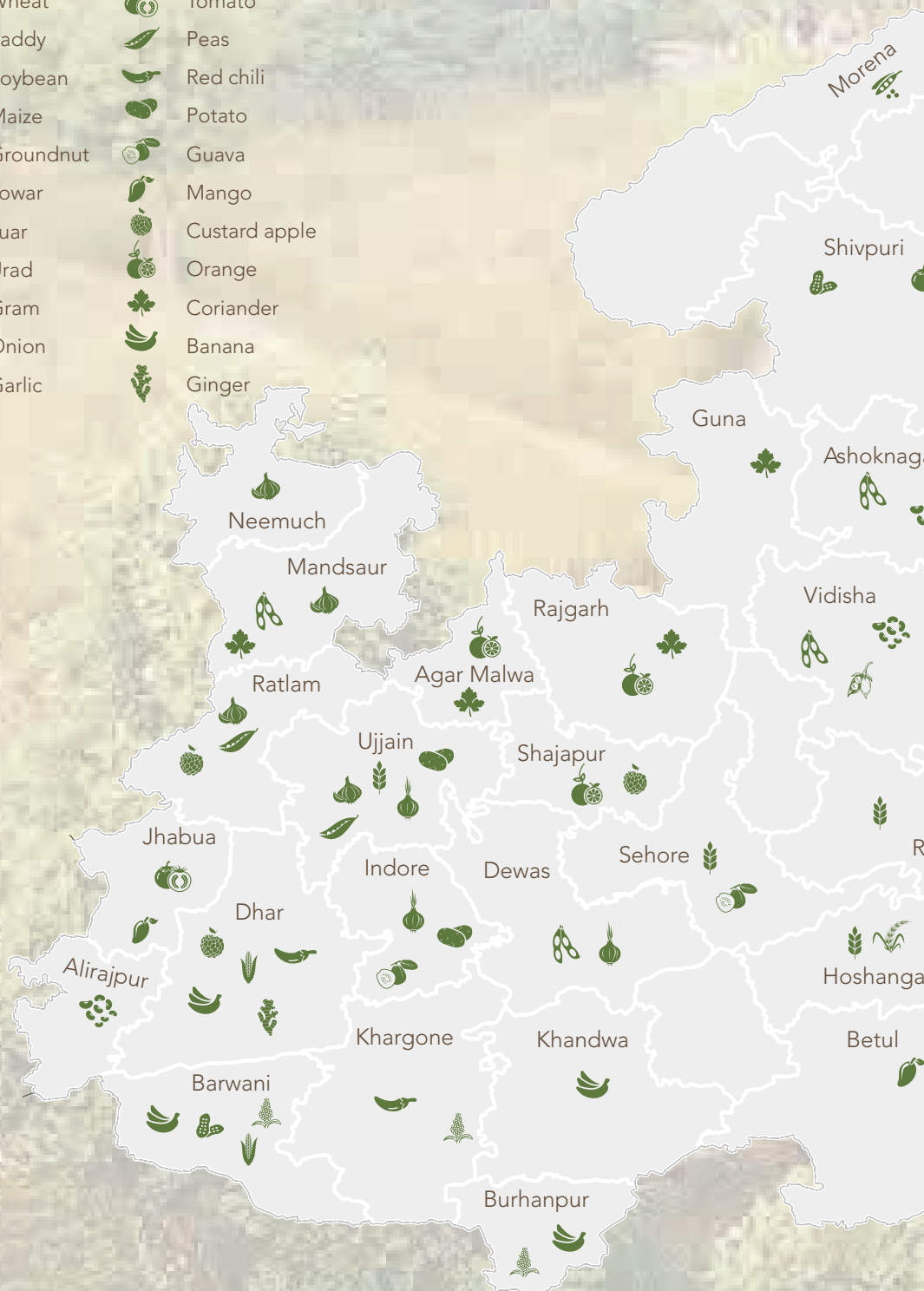
Crops	Area ('000 hectares)	Production ('000 MT)	All India Rank	Percent of MP's share
Fruit Production				
Guava	49324.93	930356.87		17.20%
Orange	25123.80	378366.92	1st	
Vegetable Production				
Onion	186920	4548560	2nd	17.0%
Tomato	102920	2970310	2nd	14.1%
Chillies (Green)	57968.07	905250.16	2nd	21.4%
Potato	156390	3566940	5th	6.6%
Spices Production	724020	3473108.00	1st	31.9%
Garlic	201876	2070951	1st	63.2%
Ginger	31989	515741	1st	24.3%
Coriander	290051	390531	1st	48.8%
Chillies (red)	118295	303069	3rd	16.2%

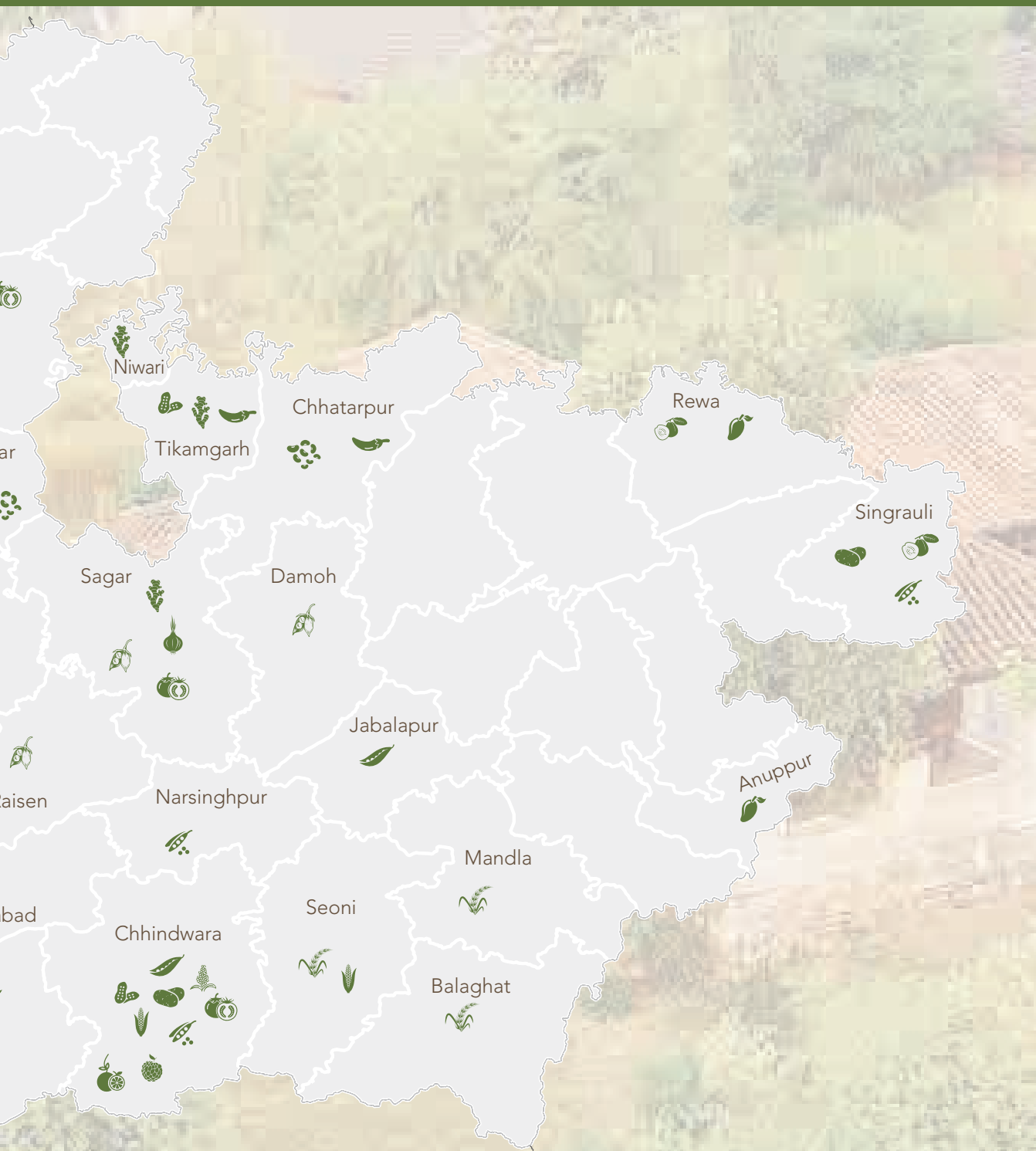
Source: HAPIS Data 2021-22 3rd Estimate, Agriculture Statistics 2021, Spice Board of India



# District-wise Crops Produced

- |   |           |   |               |
|---|-----------|---|---------------|
|  | Wheat     |  | Tomato        |
|  | Paddy     |  | Peas          |
|  | Soybean   |  | Red chili     |
|  | Maize     |  | Potato        |
|  | Groundnut |  | Guava         |
|  | Jowar     |  | Mango         |
|  | Tuar      |  | Custard apple |
|  | Urad      |  | Orange        |
|  | Gram      |  | Coriander     |
|  | Onion     |  | Banana        |
|  | Garlic    |  | Ginger        |

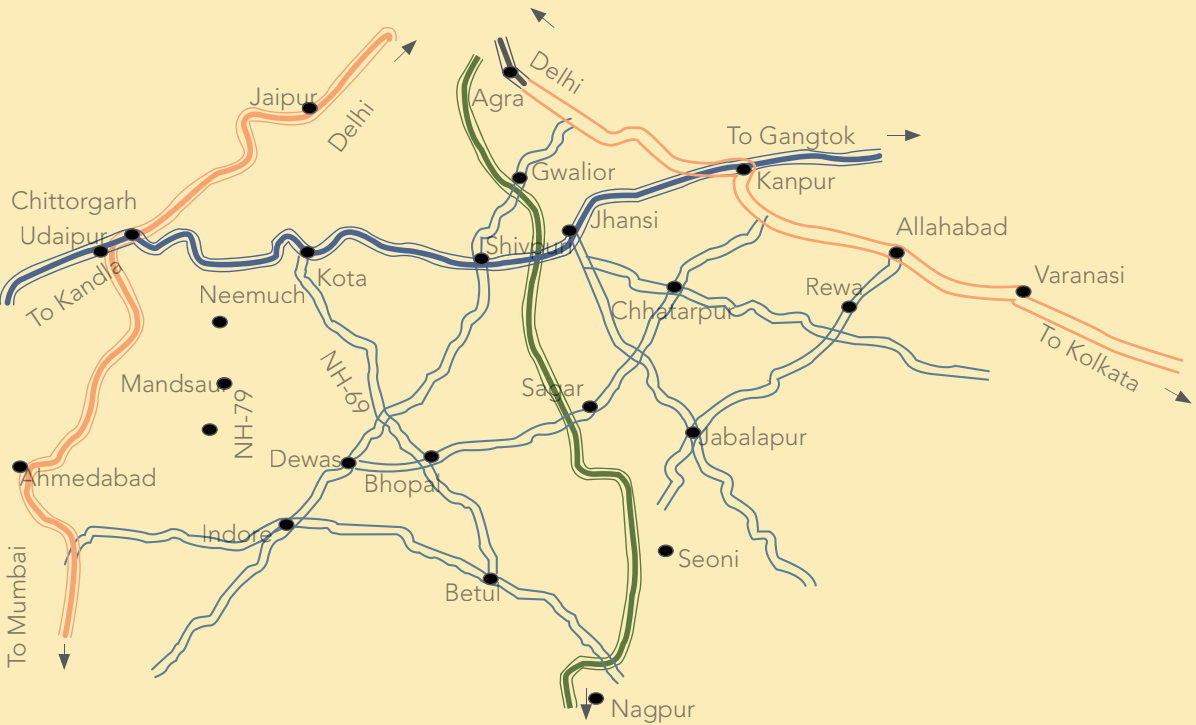






# Madhya Pradesh

## Robust Road Network



- Golden Quadrilateral
- North South Corridor
- East-West Corridor
- National Highway

# Capability Profiles of Leading FPOs in **Madhya Pradesh**



# Samarth Kisan Producer Company Private Limited



## About Us

Samarth Kisan Producer Company Private Limited was registered in 2006



## Location

Located in Agar, Susner block in the Agar Malwa district Madhya Pradesh

## Contact Details



**CEO**  
Ramsingh Thakur  
samarthkpcpl@gmail.com  
9826372427



## Promoting Agency

Madhya Pradesh State Rural Livelihood Mission



## Number of Staff

8



**Chairman**  
Dilip Solanki  
8878970162

### • CAPABILITY PROFILE •





# Ghunadi Agri Producer Company Limited



## About Us

Ghunadi Agri Producer Company Limited was registered in 2019



## Location

Located in Katangi block in Balaghat district in Madhya Pradesh

## Contact Details



### CEO

Shailendra Rahangdale  
shailendrarahangdale@gmail.com  
8120158226



## Promoting Agency

Erodo Baraseoni



## Number of Staff

2



## Managing Director

Agdeynath Patley  
8120158226

## • CAPABILITY PROFILE •



### Institutional Capability

Shareholders 427

Equity 5.27 Lakh

Tie ups & MoUs NA

Institutional linkages NA



### Business Capability

Type of Business Inputs

Crops Paddy Wheat Mustard

License Seed, Pesticides, FSSAI

3 Years Turnover 2.40 Lakh 2.04 Lakh 11.1 Lakh



### Infrastructural Capability

Own Storages MT Rental

Primary Processing Infra None

Secondary Processing Infrastructure None



### Financial Capability

Financial linkage NABKISAN

SFAC Equity Grant NA

# Bainganga Kisan Utpadak Producer Company Limited



## About Us

Bainganga Kisan Utpadak Producer Company Limited was registered in 2019



## Location

Kaitangi block in Balaghat district in Madhya Pradesh

## Contact Details



### CEO

Dev Bopche  
Devbopche119@gmail.com  
9340645232



## Promoting Agency

Erido Baraseoni



## Number of Staff

2



## Managing Director

Jagdish Deshmukh  
9617459882

## . CAPABILITY PROFILE .



# Agasi Agri Producer Company Limited



## About Us

Agasi Agri Producer Company Limited was registered in 2019



## Location

Kaitangi block in Balaghat district in Madhya Pradesh

## Contact Details



### CEO

Bholaram Choudhary  
bholaramchoudhary139@gmail.com  
9754432058



## Promoting Agency

Aredo Swayam SEBI Sanstha Baraseoni



## Number of Staff

2



## Managing Director

Chetrasen Choudhery  
9165140209

## . CAPABILITY PROFILE .





# Aashtha Crop Producer Company Limited



## About Us

Aashtha Crop Producer Company Limited was registered in 2016



## Location

Khairlanjiblock in  
Balaghat district in  
Madhya Pradesh

## Contact Details



### CEO

Ashwini Kumar Banker  
ashvin440@gmail.com  
8839066300



## Promoting Agency

Unnati



## Number of Staff

2



## Managing Director

Durga prasad patley  
8959830643

## • CAPABILITY PROFILE •



### Institutional Capability

Shareholders 625

Equity 3.24 Lakh

Tie ups & MoUs NA

Institutional linkages NA



### Business Capability

Type of Business Inputs & output

Crops Paddy

License Seed Selling  
Pesticides  
Fertilizers  
Mandi

3 Years Turnover 11.8 Lakh  
20.0 Lakh  
8.42 Lakh



### Infrastructural Capability

Own Storages MT Rental

Primary Processing Infrastructure None

Secondary Processing Infrastructure None



### Financial Capability

Financial linkage NABARD- Rs. 2 Lakh

SFAC Equity Grant NA

# Halon Farmer Producer Company Limited



## About Us

Halon Farmer Producer Company Limited was registered in 2020



## Location

Baiharblock in  
Balaghat district in  
Madhya Pradesh

## Contact Details



### CEO

Rameshwar Yadav  
halonfpo@gmail.com  
9424315944



## Promoting Agency

Gram Seva Trust



## Number of Staff

1



## Managing Director

Sagun Muneshwar  
7067639867

## • CAPABILITY PROFILE •



### Institutional Capability

Shareholders 250

Equity 3.5 Lakh

Tie ups & MoUs NA

Institutional linkages NA



### Business Capability

Type of Business Paddy Seed

Crops Paddy

License Input

3 Years Turnover 4.5 Lakh  
9.5 Lakh  
NA



### Infrastructural Capability

Own Storages MT Rented Facility

Primary Processing Infrastructure None

Secondary Processing Infrastructure None



### Financial Capability

Financial linkage Nabkisan Bhopal

SFAC Equity Grant NA

# Bund Crop Producer Company Limited



## About Us

Bund Crop Producer Company Limited was registered in 2019



## Location

Paraswada block in Balaghat district in Madhya Pradesh

## Contact Details



### CEO

Surendra Meravi  
bundfpo@gmail.com  
8815953094



## Promoting Agency

Gram Seva Trust



## Number of Staff

1



## Managing Director

Hare Singh Meravi  
7804949107

## CAPABILITY PROFILE



### Institutional Capability



Shareholders 325



Equity 6.30 Lakh



Tie ups & MoUs NA



Institutional linkages NA



### Business Capability



Type of Business Paddy Seed



Crops NA



License Input



3 Years Turnover  
5.00 Lakh  
6.50 Lakh  
10.5 Lakh



### Infrastructural Capability



Own Storages MT Rented Facility



Primary Processing Infrastructure None



Secondary Processing Infrastructure None



### Financial Capability



Financial linkage Nabkisan Bhopal



SFAC Equity Grant NA



# Rah Crop Producer Company Limited



## About Us

Rah Crop Producer Company Limited was registered on 2019



## Location

Paraswada block in Balaghat district in Madhya Pradesh

## Contact Details



### CEO

Ganga Ram bompre  
rahfpo@gmail.com  
8305441416



## Promoting Agency

Gram Seva Trust



## Number of Staff

1



## Managing Director


Tara Chand Belji  
9399160625

## • CAPABILITY PROFILE •



### Institutional Capability

 Shareholders 565

 Equity 28.0 Lakh


 Tie ups & MoUs NA

 Institutional linkages NA



### Business Capability

 Type of Business Paddy Seed

 Crops Black Rice

 License Input and FSSAI

 3 Years Turnover 5.0 Lakh  
34 Lakh  
45 Lakh



### Infrastructural Capability


 Own Storages MT Rented Facility

 Primary Processing Infrastructure None

 Secondary Processing Infrastructure None



### Financial Capability

 Financial linkage Nabkisan finance Limited

 SFAC Equity Grant NA

# Prayash Agri Producer Company Limited



## About Us

Prayash Agri Producer Company Limited was registered in 2019



## Location

Paraswada block in Balaghat district in Madhya Pradesh

## Contact Details



### CEO

Durgesh Hirwane  
prayashfpo@gmail.com  
8319847449



## Promoting Agency

Gram Seva Trust



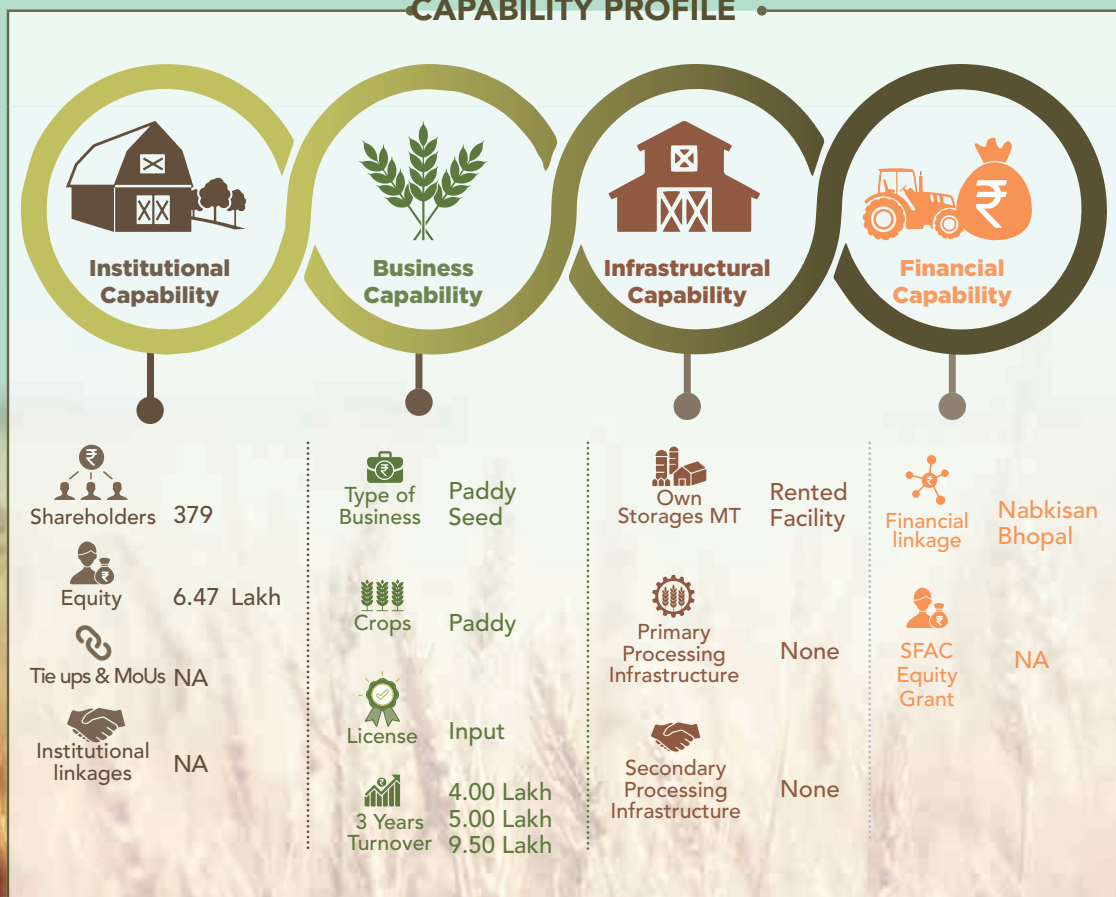
## Number of Staff

1



**Managing Director**  
Samal Singh Dhurwe  
9754096578

## CAPABILITY PROFILE



# Sahjana Agri Producer Company Limited



## About Us

Sahjana Agri producer Company Limited was registered in 2019



## Location

Paraswada block in Balaghat district in Madhya Pradesh

## Contact Details



### CEO

Hitanshu Sonekar  
soyel.sonekar@gmail.com  
9993369121



## Promoting Agency

NABARD



## Number of Staff

2



### Chairman

Rameshwar Sonekar  
9424906514

## • CAPABILITY PROFILE •



### Institutional Capability

Shareholders 410

Equity 6.12 Lakh

Tie ups & MoUs NA

Institutional linkages NA



### Business Capability

Type of Business Paddy Seed, Mustard oil, Black Rice

Crops Paddy

License Seed, Fertilizer FSSAI, Mandi forest produce Licenses

3 Years Turnover 2.0 Lakh  
35 Lakh  
25 Lakh



### Infrastructural Capability

Own Storages MT Owned

Primary Processing Infrastructure None

Secondary Processing Infrastructure None



### Financial Capability

Financial linkage Nabkisan Finance Limited-Rs. 10 Lakh

SFAC Equity Grant NA



# Samatpuri Agri Producer Company Limited



## About Us

Samatpuri Agri Producer Company Limited was registered in 2019



## Location

Katangji block in Balaghat district in Madhya Pradesh

## Contact Details



### CEO

Vilash Jhingre  
samatpuriagpcl@gmail.com  
7987290195



## Promoting Agency

NABARD



## Number of Staff

12



## Managing Director

Kiratraj Patle  
7415347257

## • CAPABILITY PROFILE •



### Institutional Capability



Shareholders 305



Equity 4.05 Lakh



Tie ups & MoUs NA



Institutional linkages NA



### Business Capability



Type of Business Input



Crops None



Seed Pesticides Fertilizers FSSAI



3 Years Turnover 2.40 Lakh 5.94 Lakh 25.3 Lakh



### Infrastructural Capability



Own Storages MT Owned



Primary Processing Infrastructure Dal Mil



Secondary Processing Infrastructure None



### Financial Capability



Financial linkage SFAC-Rs. 5 Lakh



SFAC Equity Grant NA

# Sawangi Crop Producer Company Limited



## About Us

Sawangi Crop Producer Company Limited was registered in 2021



## Location

Katang block in Balaghat district in Madhya Pradesh

## Contact Details



### CEO

Dulendra Bisen  
sawangicpcl@gmail.com  
9131110900



## Promoting Agency

NABARD



## Number of Staff

2



### Chairman

Rajaram Bisen  
9109021605

## • CAPABILITY PROFILE •



### Institutional Capability

Shareholders 310

Equity 4.10 Lakh

Tie ups & MoUs NA

Institutional linkages NA



### Business Capability

Type of Business Inputs

Crops Paddy Groundnut Wheat

License Seed, Pesticides, Fertilizers, FSSAI

3 Years Turnover 2.40 Lakh 4.63 Lakh 10.5 Lakh



### Infrastructural Capability

Own Storages MT Rented Facility

Primary Processing Infrastructure None

Secondary Processing Infrastructure None



### Financial Capability

Financial linkage NA

SFAC Equity Grant NA

# Unnati Agri Producer Company Limited



## About Us

Unnati Agri Producer Company Limited was registered in 2016



## Location

Waraseoni block in Balaghat district in Madhya Pradesh

## Contact Details



### CEO

Rupesh Kumar Sonkusre  
unnatiagpcl@gmail.com  
9300494967



## Promoting Agency

NABARD



## Number of Staff

2



### Chairman

Tarachand Bisen  
9617234091

## •CAPABILITY PROFILE •



### Institutional Capability

Shareholders 353

Equity 2.12 Lakh

Tie ups & MoUs NA

Institutional linkages NA



### Business Capability

Inputs & Paddy Procurement

Crops NONE

Seed Selling Pesticides FSSAI, Mandi

3 Years Turnover 6.02 Lakh  
20.2 Lakh  
27.9 Lakh



### Infrastructural Capability

Own Storages MT Rented Facility

Primary Processing Infrastructure None

Secondary Processing Infrastructure None



### Financial Capability

Financial linkage Agriculture Credit Scheme-Rs. 8 Lakh

SFAC Equity Grant NA

# Vidhata Crop Producer Company Limited



## About Us

Vidhata Crop Producer Company Limited was registered in 2015



## Location

Waraseoni block in Balaghat district in Madhya Pradesh

## Contact Details



### CEO

Rajkumar Basene  
rajkumar.basene@gmail.com  
8889027214



## Promoting Agency

NABARD



## Number of Staff

11



## Chairman


Anita Bisen  
7617231621

## • CAPABILITY PROFILE •



### Institutional Capability

  
Shareholders 301

  
Equity 2.25 Lakh

  
Tie ups & MoUs NA

  
Institutional linkages NA



### Business Capability

  
Type of Business Input Seed

  
Crops NONE

  
License Mandi

  
3 Years Turnover 11.0 Lakh  
10.5 Lakh  
11.0 Lakh



### Infrastructural Capability

  
Own Storages MT Owned

  
Primary Processing Infrastructure None

  
Secondary Processing Infrastructure None



### Financial Capability

  
Financial linkage Nabkisan Finance Limited-Rs. 15 lakhs

  
SFAC Equity Grant NA



# Khas Crop Producer Company Limited



## About Us

Khas Crop Producer Company Limited was registered in 2022



## Location

Kherlanji block in Balaghat district in Madhya Pradesh

## Contact Details



### CEO

Deepak loknand patle  
khaskhairlanji2022@gmail.com  
7620185969



## Promoting Agency

Anupama Education Society



## Number of Staff

2



## Managing Director

Jiyalal Dohre  
9926927835

## •CAPABILITY PROFILE •



### Institutional Capability

	Shareholders	325
	Equity	3.35 Lakh
	Tie ups & MoUs	NA
	Institutional linkages	NA



### Business Capability

	Type of Business	Inputs
	Crops	Paddy Seed
	License	Inputs (Chemical/ fertilizers Seed)
	3 Years Turnover	0.00 0.00 0.00



### Infrastructural Capability

	Own Storages MT	Rented Facility
	Primary Processing Infrastructure	None
	Secondary Processing Infrastructure	None



### Financial Capability

	Financial linkage	NA
	SFAC Equity Grant	NA

# Kisli Crop Producer Company Limited



## About Us

Kisli Crop Producer Company Limited was registered in 2019



## Location

Paraswada block in Kisli district in Madhya Pradesh

## Contact Details



### CEO

durgesh pancheshwar  
kishlifpo@gmail.com  
9589732898



## Promoting Agency

Gram Seva Trust



## Number of Staff

1



## Managing Director


Thal Singh Patle  
6265223487

## • CAPABILITY PROFILE •



### Institutional Capability

 Shareholders 317

 Equity 5.25 Lakh


 Tie ups & MoUs NA

 Institutional linkages NA




### Business Capability

 Type of Business Inputs

 Crops Paddy Seed

 License Input & FSSAI

 3 Years Turnover 0.00  
0.00  
3.91 Lakh



### Infrastructural Capability

 Own Storages MT Rented Facility

 Primary Processing Infrastructure None

 Secondary Processing Infrastructure None



### Financial Capability

 Financial linkage Nabkisan Finance Limited

 SFAC Equity Grant NA

# Lanji Farmer Producer Company Limited



## About Us

Lanji farmer Producer Company Limited was registered in 2020



## Location

Lanji block in Balaghat district in Madhya Pradesh



## Contact Details

**CEO**  
Santosh  
fpolanji@gamil.com  
8839921757



## Promoting Agency

NABARD



## Number of Staff

1



**Managing Director**  
Bhagchand dashaiya  
9691745561

## •CAPABILITY PROFILE •



# Balaghat Rural Livelihood Seed Producer Company Limited



## About Us

Balaghat Rural Livelihood Seed Producer Company Limited was registered in 2021



## Location

Located in Balaghat district in Madhya Pradesh

## Contact Details



### CEO

Rahul Sahare  
balaghatfpc@gmail.com  
9641670707



## Promoting Agency

MPSRLM



## Number of Staff

3



## Chairman

Smt. Anjani Lillahe  
8319510581

## • CAPABILITY PROFILE •



### Institutional Capability

Shareholders 350

Equity 5.50 Lakh

Tie ups & MoUs NA

Institutional linkages NA



### Business Capability

Type of Business Inputs and Outputs

Crops Paddy

License Input & FSSAI

3 Years Turnover 0.00  
38.0 Lakh  
24.0 Lakh



### Infrastructural Capability

Own Storages MT Rented Facility

Primary Processing Infrastructure None

Secondary Processing Infrastructure None



### Financial Capability

Samunnati finance Limited Rs. 16 Lakhs

SFAC Equity Grant 1.6 lakh



# Chinnor Valley Producer Company Limited



## About Us

Chinnor Valley Producer Company Limited was registered in 2021



## Location

Located in Waraseoni block in Balaghat district in Madhya Pradesh

## Contact Details



### CEO

Vishal Nagpure  
vallychinnor@gmail.com  
7566897431



## Promoting Agency

Madhya Pradesh State Rural Livelihood Mission



## Number of Staff

3



### Chairman

Rekha Raut  
6266845025

## •CAPABILITY PROFILE •



### Institutional Capability



Shareholders 411



Equity 2.49 Lakh



Tie ups & MoUs 15.40 Lakh



Institutional linkages NA



### Business Capability



Type of Business Inputs & Outputs



Crops Paddy



License Input & FSSAI



3 Years Turnover 0.00  
5.00 Lakh  
18.0 Lakh



### Infrastructural Capability



Own Storages MT Rented



Primary Processing Infrastructure None



Secondary Processing Infrastructure None



### Financial Capability



Sammunnati Finance Limited Rs. 5 Lakh



SFAC Equity Grant 15.40 Lakh

# Ghunadi Agri Producer Company Limited



## About Us

Ghunadi Agri Producer Company Limited was registered in 2019



## Location

Located in Katangi block in Balaghat district in Madhya Pradesh

## Contact Details



### CEO

Shailendra Rahangdale  
shailendrarahangdale@gmail.com  
6263646247



## Promoting Agency

Erodo Baraseoni



## Number of Staff

2



## Managing Director

Agdeynath Patley  
8120158226

## • CAPABILITY PROFILE •



### Institutional Capability

	Shareholders	427
	Equity	5.27 Lakh
	Tie ups & MoUs	NA
	Institutional linkages	



### Business Capability

	Type of Business	Inputs
	Crops	Paddy Wheat Mustard
	License	Seed Pesticides FSSAI
	3 Years Turnover	2.40 Lakh 2.04 Lakh 11.1 Lakh



### Infrastructural Capability

	Own Storages	MT	Rented
	Primary Processing Infrastructure		None
	Secondary Processing Infrastructure		None



### Financial Capability

	Financial linkage	Nabkisan
	SFAC Equity Grant	NA

# Nimad Farmer Producer Company Limited



## About Us

Nimad Farmer Producer Company Limited was registered in 2009



## Location

Located in Ozar block in Barwani district in Madhya Pradesh

## Contact Details



### CEO

Trilok Solanki  
triloksolanki2215@gmail.com  
7067033011



## Promoting Agency

Madhya Pradesh State Rural Livelihood Mission



## Number of Staff

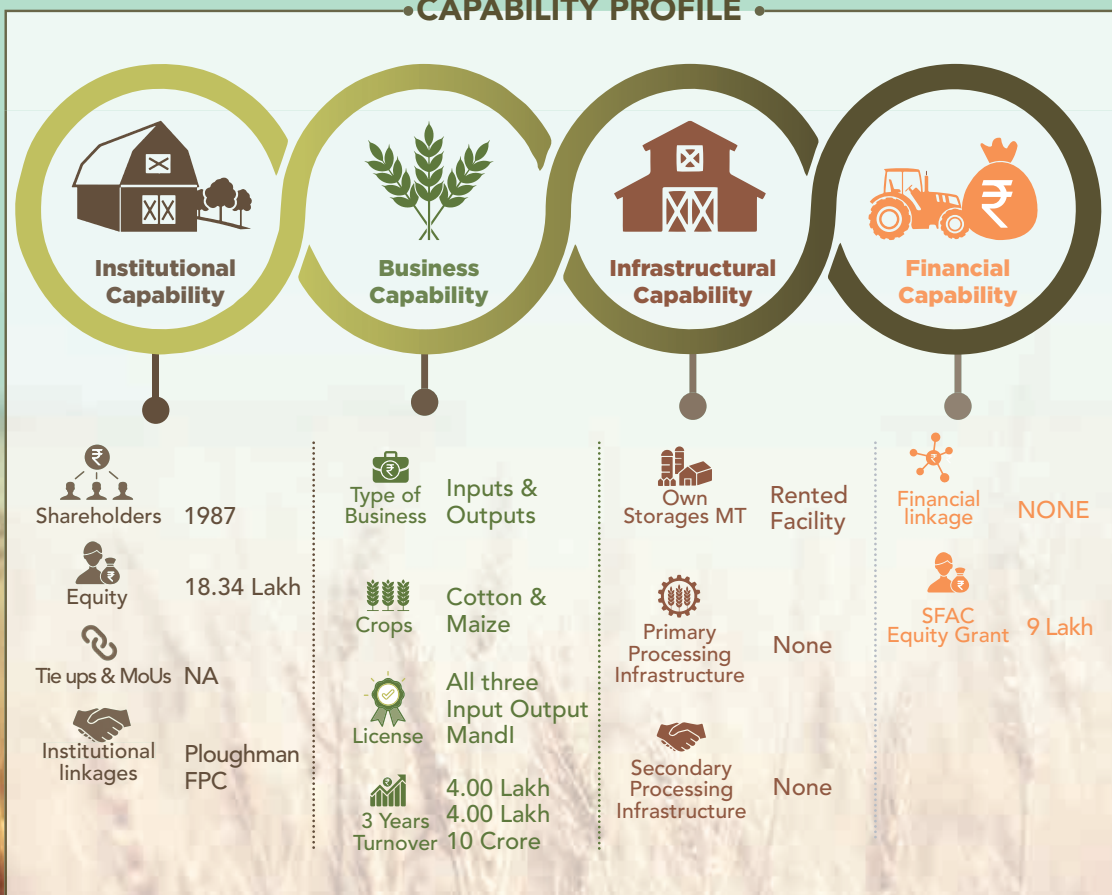
1



### Chairman

Dinesh Yadav  
6266313140

## •CAPABILITY PROFILE •



# Chirayu Mahila Kisan Crop Producer Company Limited



## About Us

Chirayu Mahila Kisan Crop Producer Company Limited was registered in 2015



## Location

Located in Shahpur block in Betul district in Madhya Pradesh

## Contact Details



### CEO

Kamlesh Kotecha  
cwpc.bhoura@gmail.com  
9407250709



## Promoting Agency

MPSRLM



## Number of Staff

2



### Chairman

Lalita Choure  
7697425008

## CAPABILITY PROFILE





# Satpundanchal Farmer Producer Company Limited



## About Us

Satpundanchal Farmer Producer Company Limited was registered in 2020



## Location

Located in Shahpur block in Betul district in Madhya Pradesh

## Contact Details



### CEO

Yogesh Deshmukh  
satpudanchalfpo@gmail.com  
7049767857



## Promoting Agency

NABARD



## Number of Staff

12



## Chairman


Yashoda Kasde  
9770279179

## •CAPABILITY PROFILE •



### Institutional Capability

 Shareholders 1500

 Equity 1.50 Lakh

 Tie ups & MoUs NA

 Institutional linkages NA




### Business Capability

 Type of Business Input Supply & Trading

 Crops Wheat, Kodo kutki

 License Seed, Fertilizer, Pesticide, Mandi, FSSAI

 3 Years Turnover NA  
20.5 Lakh  
2.63 Crore



### Infrastructural Capability

 Own Storages MT Rented Facility

 Primary Processing Infrastructure None

 Secondary Processing Infrastructure None



### Financial Capability

 Financial linkage Samuunati-Rs.25 Lakhs

 SFAC Equity Grant 5 Lakh

# Unnatsheel Kisan Haldhar Producer Company Limited



## About Us

Unnatsheel Kisan Haldhar Producer Company Limited was registered in 2020



## Location

Located in Betul district in Madhya Pradesh

## Contact Details



### CEO

Yashwant Charpe  
unnatisheelfpo2021@gmail.com  
9993360692



## Promoting Agency

NABARD



## Number of Staff

2



### Chairman

RamBharose Yadav  
7974781367

## • CAPABILITY PROFILE •



### Institutional Capability

	Shareholders	436
	Equity	3.95 Lakh
	Tie ups & MoUs	NA
	Institutional linkages	NA



### Business Capability

	Type of Business	Input Supply & Trading
	Crops	NA
	License	Seed Fertilizer Pesticides Mandi license
	3 Years Turnover	NA 16.29 Lakh 28.11 Lakh



### Infrastructural Capability

	Own Storages MT	Rented Facility
	Primary Processing Infrastructure	None
	Secondary Processing Infrastructure	None



### Financial Capability

	Financial linkage	Nabkisan Finance Limited Rs. 8 Lakhs
	SFAC Equity Grant	NA

# Kutir Agri Producer Company Limited



## About Us

Kutir Agri Producer Company Limited was registered in 2016



## Location

Located in Athner block in Betul district in Madhya Pradesh

## Contact Details



### CEO

Lalit Panse  
ceo.fpokutir@ngonaman.org  
7898471514



## Promoting Agency

Naman Sewa Samiti



## Number of Staff

6



## Managing Director

Jay Dev Krashna  
8103425848

## •CAPABILITY PROFILE •



### Institutional Capability



Shareholders 214



Equity 2.23 Lakh



Tie ups & MoUs NA



Institutional linkages NA



### Business Capability



Type of Business Inputs & Processing



Crops Spices



License FSSAI



3 Years Turnover 9.00 Lakh  
17.0 Lakh  
23.0 Lakh



### Infrastructural Capability



Own Storages MT Rented Facility



Primary Processing Infrastructure Grader, Cleaner



Secondary Processing Infrastructure Atta mini plant, grader, cleaner all



### Financial Capability



Financial linkage NA



SFAC Equity Grant NA

# Evraj Seeds Producer Company Limited



## About Us

Evraj Seeds Producer Company limited was registered in 2019



## Location

Located in Berasiya block in Bhopal district in Madhya Pradesh

## Contact Details



### CEO

Virendra Singh  
vmaran01@gmail.com  
7509771780



## Promoting Agency

NA



## Number of Staff

2



## Managing Director


Arun Meena  
9926199838

## • CAPABILITY PROFILE •



### Institutional Capability

 Shareholders 504

 Equity 5.00 Lakh


 Tie ups & MoUs NA

 Institutional linkages NA



### Business Capability

 Type of Business Input & output

 Crops Wheat and Soybean, Paddy

 SEED E-NAM License

 3 Years Turnover 9.00 Lakh  
25.0 Lakh  
65.6 Lakh



### Infrastructural Capability

 Own Storages MT Rented


 Primary Processing Infrastructure None

 Secondary Processing Infrastructure None



### Financial Capability

 Financial linkage MPGB-Rs. 9.50 Lakh

 SFAC Equity Grant NA



# Nowgaon Agriculture Producer Company Limited



## About Us

Nowgaon Agriculture Producer Company Limited was registered in 2006



## Location

Located in Nowgaon block in Chhattarpur ditrict in Madhya Pradesh

## Contact Details



### CEO

Rajbahadur Patel  
napcl@yahoo.in  
9993931650, 9630755158



## Promoting Agency

Madhya Pradesh  
State Rural  
Livelihood Mission



## Number of Staff

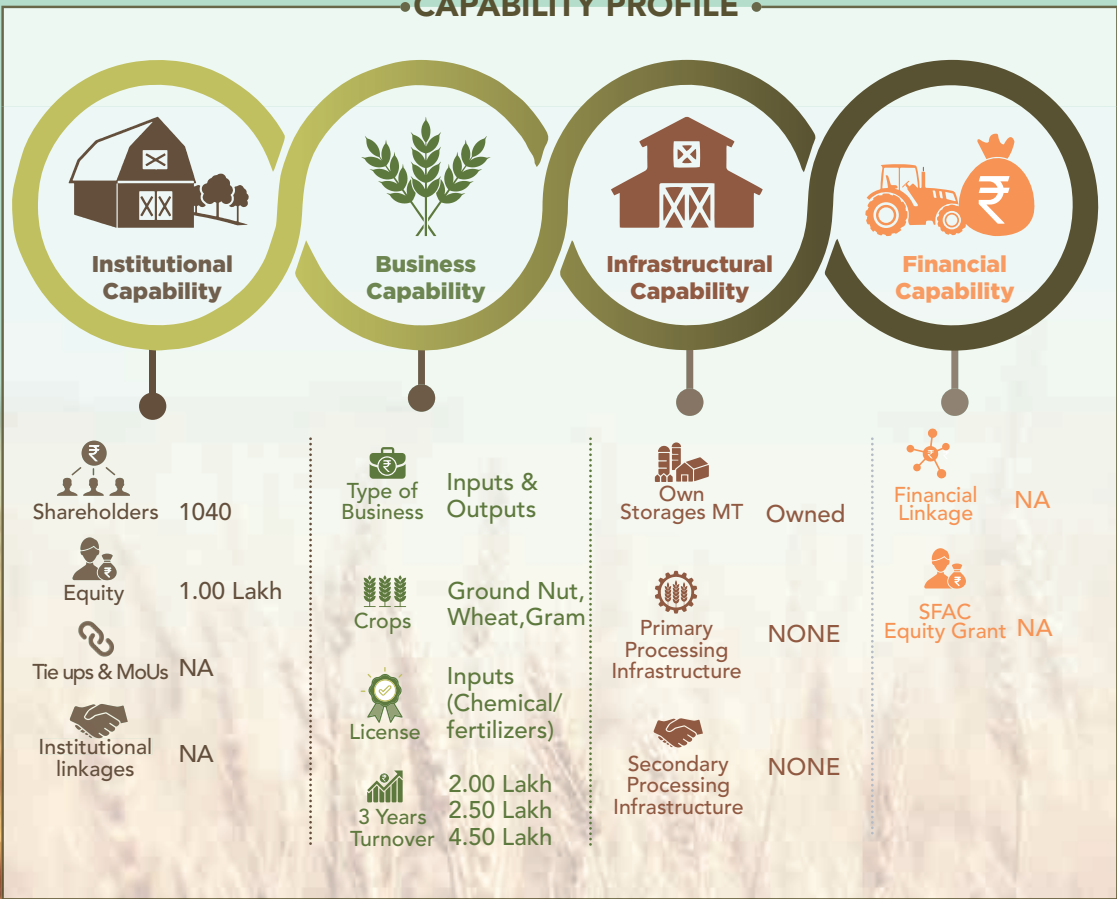
2



### Chairman

Chhatpal Singh  
9522654074

## •CAPABILITY PROFILE •



# Chhatarpur Mahila Kisan Producer Company Limited



## About Us

Chhatarpur Mahila Kisan Producer Company Limited was registered in 2012



## Location

Located in Nowgaon block in Chhattarpur district in Madhya Pradesh

## Contact Details



### CEO

Sanjay Choubey  
cmkpcl@gmail.com  
9893886384



## Promoting Agency

MPSRLM



## Number of Staff

1



## Chairman

Rajesh Choukarya  
Urmila gour  
9977671251

## CAPABILITY PROFILE



### Institutional Capability

Shareholders 2553

Equity 15.0 Lakh

Tie ups & MoUs NA

Institutional linkages Ploughman FPC



### Business Capability

Type of Business Inputs & seed Production

Crops Soybean Wheat Ground Nut

License Both Input and Mandi

3 Years Turnover 1.00 Lakh 1.50 Lakh 2.00 Lakh



### Infrastructural Capability

Own Storages MT Owned

Primary Processing Infrastructure Grader

Secondary Processing Infrastructure None



### Financial Capability

Financial linkage NA

SFAC Equity Grant 60 Lakh

# Bijawar Producer Company Limited



## About Us

Bijawar Producer Company Limited was registered in 2011



## Location

Located in Bijawar block in Chhatarour district in Madhya Pradesh

## Contact Details



### CEO

Devendra Chaturvedi  
bpclbijawar@gmail.com  
9893704438



## Promoting Agency

Madhya Pradesh State Rural Livelihood Mission



## Number of Staff

2



### Chairman

Rameshwar Tiwari  
9691779135

## •CAPABILITY PROFILE •



### Institutional Capability

Shareholders 2021

Equity 25.0 Lakh

Tie ups & MoUs NA

Institutional linkages NA



### Business Capability

Type of Business  
Inputs & Seed Production

Crops  
Wheat  
Soybean  
Gram  
Groundnut

License  
Both Input and Mandi

3 Years Turnover  
53.6 Lakh  
73.6 Lakh  
42.1 Lakh



### Infrastructural Capability

Own Storages MT Owned

Primary Processing Infrastructure Seed grader

Secondary Processing Infrastructure NONE



### Financial Capability

Financial linkage 3 Lakh

SFAC Equity Grant 2.50 Lakh

# Patakot Farmers Producer Company Limited



## About Us

Patakot Farmers Producer Company Limited was registered in 2020



## Location

Located in Tamia block in Chhindwara district in Madhya Pradesh

## Contact Details



### CEO

Mohd. Arif khan  
patakotfpo@gmail.com  
7999365024



## Promoting Agency

NABARD



## Number of Staff

3



## Managing Director

Dileep Kumar bharti  
9131544755

## CAPABILITY PROFILE



### Institutional Capability

Shareholders 417

Equity 4.12 Lakh

Tie ups & MoUs NA

Institutional linkages NA



### Business Capability

Type of Business Trading of raw material, Processing

Crops Honey

License Input and FSSAI

3 Years Turnover NA  
NA  
21.48 Lakh



### Infrastructural Capability

Own Storages MT rented facility

Primary Processing Infrastructure None

Secondary Processing Infrastructure None



### Financial Capability

Financial linkage NA

SFAC Equity Grant NA



# Phalam Sampada Producer Company Limited



## About Us

Phalam Sampada Producer Company Limited was registered in 2014



## Location

Located in Tamia block in Chhindwara district Madhya Pradesh

## Contact Details



### CEO

Sunil Thakur  
phalamsampadaipo@gmail.com  
9479836640



## Promoting Agency

Madhya Pradesh Vigyan Sabha



## Number of Staff

1



## Managing Director

Guru Dyal Dhurve  
9301357754

## •CAPABILITY PROFILE •



### Institutional Capability



Shareholders 1500



Equity 1.50 Lakh



Tie ups & MoUs TRIFED, KhadiGram Udyog



Institutional linkages Local Outlets



### Business Capability



Type of Business Processing



Crops NTFP



License FSSAI



3 Years Turnover 17.0 Lakh  
26.0 Lakh  
40.0 Lakh



### Infrastructural Capability



Own Storages MT NA



Primary Processing Infrastructure Power Trifla Churna Unit



Secondary Processing Infrastructure Packaging Machine



### Financial Capability



Financial linkage MCGB-Rs. 3 Lakhs



SFAC Equity Grant NA

# Hatta Aajeevika Mahila Kisan Producer Company Limited



## About Us

Hatta Aajeevika Mahila Kisan Producer Company Limited was registered in 2021



## Location

Located in Hatta block in Damoh district in Madhya Pradesh

## Contact Details



### CEO

Gokul Atoliya  
mbc.mphattaipo@gmail.com  
9893509302



## Promoting Agency

SFAC



## Number of Staff

2



### Chairman

Sadhana Pournik  
9522978992

## CAPABILITY PROFILE



### Institutional Capability

Shareholders	310
Equity	3.10 Lakh
Tie ups & MoUs	NA
Institutional linkages	E-Naam



### Business Capability

Type of Business	Input & Output
Crops	Soybean and Oil
License	Seed Fertilizer Insecticide
3 Years Turnover	15 Lakh 59 Lakh NA



### Infrastructural Capability

Own Storages MT	Rented facility
Primary Processing Infrastructure	None
Secondary Processing Infrastructure	None



### Financial Capability

Financial linkage	Rs. 5 Lakhs Sammunati Finance
SFAC Equity Grant	3 Lakh

# Guru Gangdas Farmer Producer Company Limited



## About Us

Guru Gangdas Farmer Producer Company Limited was registered in 2020



## Location

Located in Dewas block in Dewas district in Madhya Pradesh

## Contact Details



## CEO

Akashh Nagar  
akashnagar170@gmail.com  
9713380300



## Promoting Agency

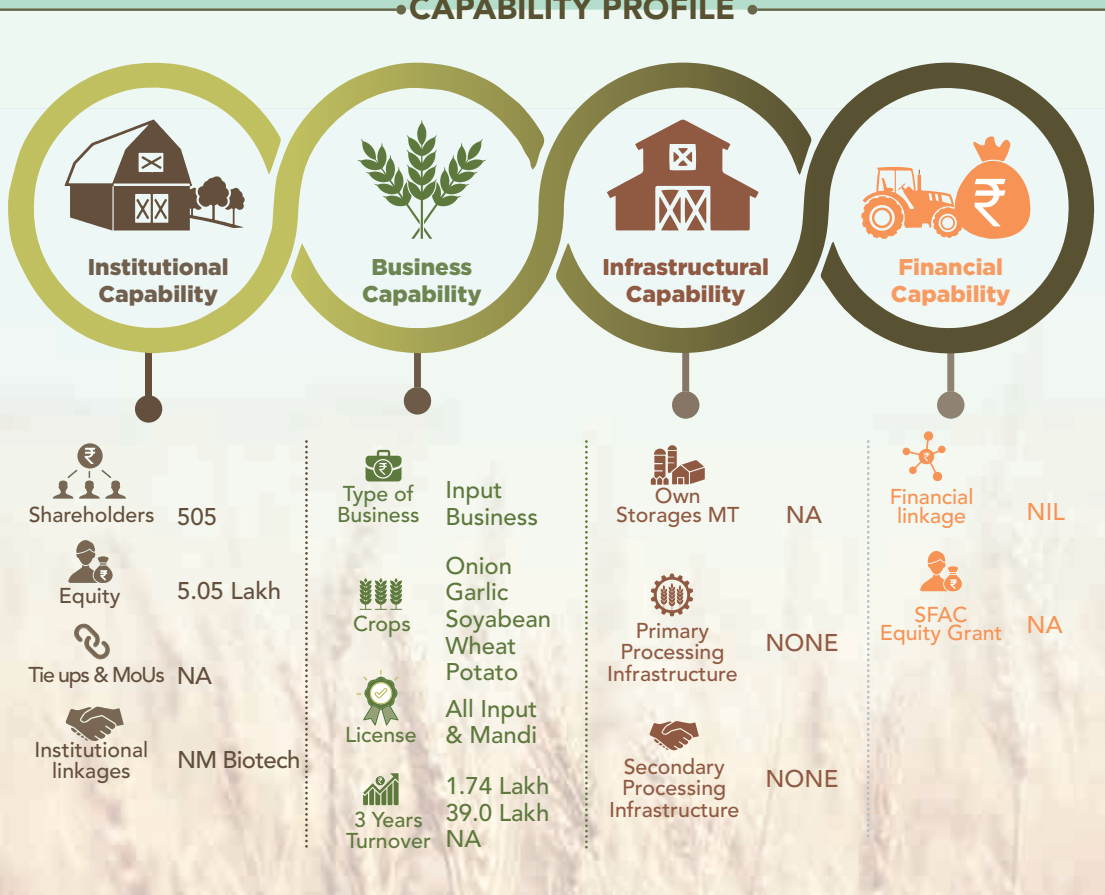
NA



## Number of Staff

3

## •CAPABILITY PROFILE •



# Sonkatch Shakti Farmer Producer Company Limited



## About Us

Sonkatch Shakti Farmer Producer Company Limited was registered in 2021



## Location

Located in Sonkatch block in Dewas district in Madhya Pradesh

## Contact Details



### CEO

Varsha Rayakwar  
ssfpcl2021@gmail.com  
8103949651/8770198910



## Promoting Agency

Madhya Pradesh State Rural Livelihood Mission



## Number of Staff

2



## Chairman

Vidhya Kushwah  
7610369062

## CAPABILITY PROFILE



### Institutional Capability



Shareholders 302



Equity 15.42 Lakh



Tie ups & MoUs Yes



Institutional linkages DeHaat



### Business Capability



Type of Business Input & Output



Crops Onion & Garlic



License NONE



3 Years Turnover NA  
3.44 Lakh  
1.93 Lakh



### Infrastructural Capability



Own Storages MT

Rented Facility



Primary Processing Infrastructure

None



Secondary Processing Infrastructure

None



### Financial Capability



Financial linkage NA



SFAC Equity Grant 6 Lakh



# Vijayaganj Mandi Farmer Producer Company Limited



## About Us

Vijayaganj Mandi Farmer Producer Company Limited was registered in 2021



## Location

Located in Dewas block in Dewas district in Madhya Pradesh

## Contact Details



### CEO

Ravindra Kumar  
mewadaravindra46@gmail.com  
8839535370



## Promoting Agency

Madhya Pradesh State Rural Livelihood Mission



## Number of Staff

2



### Chairman

Smt.Chintamani Patidaar  
8827052899

## •CAPABILITY PROFILE•



### Institutional Capability

	Shareholders	357
	Equity	14.2 Lakh
	Tie ups & MoUs	Dehaat NBHC Star-agri E-naam Walmart
	Institutional linkages	NA



### Business Capability

	Type of Business	Inputs Outputs Processing
	Crops	Onion Wheat Arhar Potato
	License	Mandi
	3 Years Turnover	NA 3.50 Lakh 41.0 Lakh



### Infrastructural Capability

	Own Storages MT	Rented Facility
	Primary Processing Infrastructure	Chips making machine
	Secondary Processing Infrastructure	Yes



### Financial Capability

	Financial linkage	Narmdajhabua Bank-Rs.7 Lakhs
	SFAC Equity Grant	NA

# Damoh Mahila Kisan Producer Company Limited



## About Us

Damoh Mahila Kisan Producer Company Limited was registered in 2021



## Location

Located in Damoh block in Damoh district in Madhya Pradesh

## Contact Details



### CEO

Bharat Singh  
mbcfpcldamoh@gmail.com  
8103745959



## Promoting Agency

SFAC



## Number of Staff

2



### Chairman

Tulsa Prajapati  
7471104077

## • CAPABILITY PROFILE •



### Institutional Capability

Shareholders 310

Equity 6.20 Lakh

Tie ups & MoUs NA

Institutional linkages NA



### Business Capability

Type of Business Inputs & Outputs

Crops Soybean and Oil

License Seed Fertilizer Insecticide

3 Years Turnover NA  
6.50 Lakh  
1.58 Crore



### Infrastructural Capability

Own Storages MT Rented facility

Primary Processing Infrastructure None

Secondary Processing Infrastructure None



### Financial Capability

Financial linkage Sammunati Finance Rs.1 Lakhs

SFAC Equity Grant 3.10 Lakh

# Shree Chambal Valley Kisan Utpadak Producer Company Limited



## About Us

Shree Chambal Valley Kisan Utpadak Producer Company Limited was registered in 2021



## Location

Located in Dhar block in Dhar district in Madhya Pradesh

## Contact Details



### CEO

Dharmendra Chalke  
chambalfpo@gmail.com  
9425307174



## Promoting Agency

NABARD



## Number of Staff

1



### Chairman

Narayan Patidar  
7047051111

## •CAPABILITY PROFILE •



### Institutional Capability



Shareholders 325



Equity 48 Thousand



Tie ups & MoUs Eagle Seeds



Institutional linkages NA



### Business Capability



Type of Business Input Business



Crops Soyabean



License Input (Seed, Fertilizer, Pesticide)



3 Years Turnover NA  
NA  
4.80 Lakh



### Infrastructural Capability



Own Storages MT Rented Facility



Primary Processing Infrastructure NONE



Secondary Processing Infrastructure NONE



### Financial Capability



Financial linkage NONE



SEAC Equity Grant NA

# Krishi Srijan Kisan Utpadak Producer Company Limited



## About Us

Krishi Srijan Kisan Utpadak Producer Company Limited was registered in 2021



## Location

Located in Manawar block in Dhar district in Madhya Pradesh

## Contact Details



### CEO

Subham patidar  
krishisirjanfpo@gmail.com  
75820 49248



## Promoting Agency

Integrated Socio Economic Development Services (ISED)



## Number of Staff

1



## Managing Director

Kailash Patel  
9981061630

## CAPABILITY PROFILE



### Institutional Capability

	Shareholders	330
	Equity	3.30 Lakh
	Tie ups & MoUs	NA
	Institutional linkages	NA



### Business Capability

	Type of Business	Inputs Business
	Crops	Cotton Maize Chilli
	License	Inputs (Chemical/ fertilizers)
	3 Years Turnover	NA NA NA



### Infrastructural Capability

	Own Storages MT	Rented Facility
	Primary Processing Infrastructure	None
	Secondary Processing Infrastructure	None



### Financial Capability

	Financial linkage	NONE
	SFAC Equity Grant	3 Lakh



# Natural Herbal Farmers Producer Company Limited



## About Us

Natural Herbal Farmers Producer Company Limited was registered in 2021



## Location

Located in Kukshi block in Dhar district in Madhya Pradesh



## Contact Details

CEO  
Vikash Kag  
naturalharabalfpo@gmail.com  
9685153910



## Promoting Agency

Integrated Socio Economic Development Services (ISED)



## Number of Staff

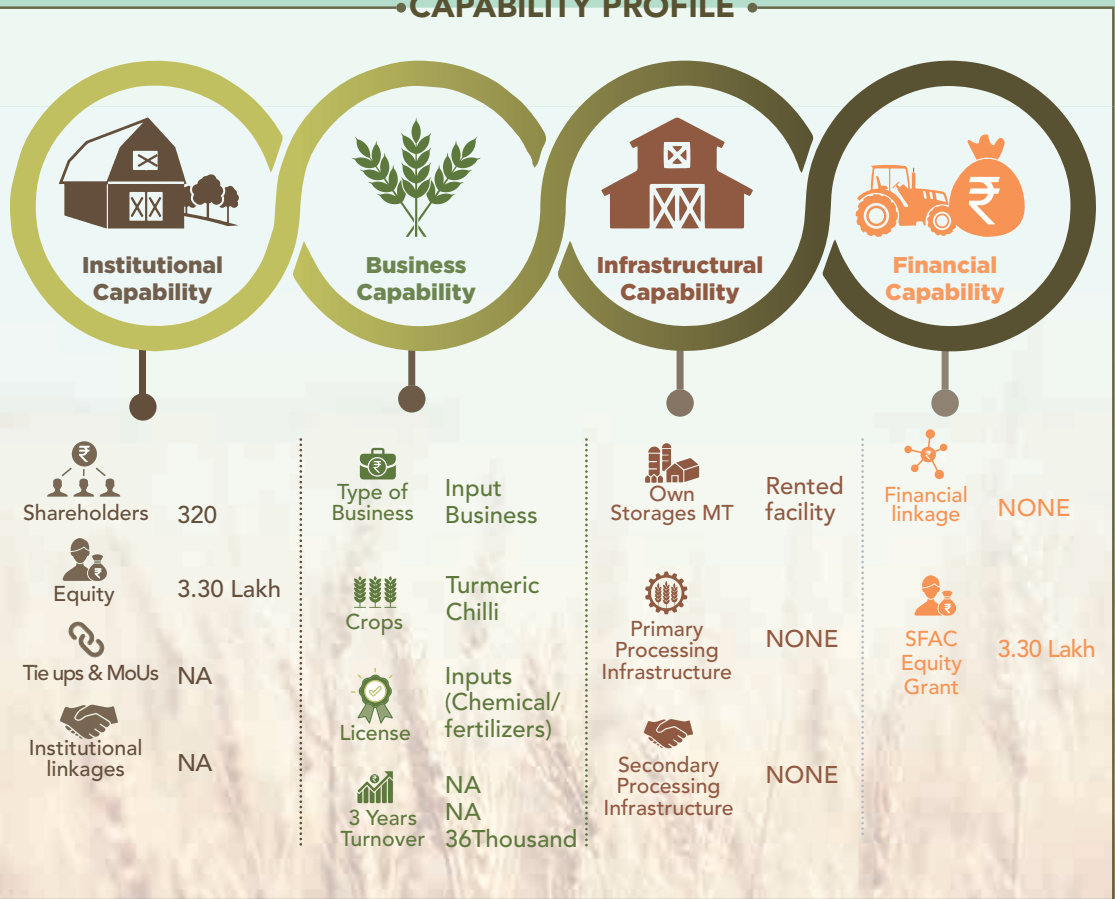
1



## Managing Director

Jay Pal Singh  
7869611893

### •CAPABILITY PROFILE •



# Baiga Chak Mahila Kisan Producer Company Limited



## About Us

Baiga Chak Mahila Kisan Producer Company Limited was registered in 2020



## Location

Located in Dindori block in Dindori district in Madhya Pradesh

## Contact Details



### CEO

Nishank Choudhary  
ceo.baigachakpc@gmail.com  
8445882027



## Promoting Agency

MPSRLM



## Number of Staff

14



### Chairman

Man Kumari  
6260861814

## • CAPABILITY PROFILE •



### Institutional Capability

	7044
	3.70 Lakh
	NA
	NA



### Business Capability

	Inputs & Outputs
	Kodo, Kutki, Lentil, Alsli Rice, Peas
	All Three Input Output Mandi
	NA 8.48 Lakh 1.12 Crore



### Infrastructural Capability

	rented facility
	None
	None



### Financial Capability

	NONE
	NA

# Samnapur Ajivikamahila Farmer Producer Company Limited



## About Us

Samnapur Ajivikamahila Farmer Producer Company Limited was registered in 2021



## Location

Located in Samnapur block in Dindori district in Madhya Pradesh

## Contact Details



### CEO

D. S. Raghuvanshi  
devisingh.raghuwanshi@BAIF.org.in  
9770613711



## Promoting Agency

Madhya Pradesh  
State Rural  
Livelihood Mission



## Number of Staff

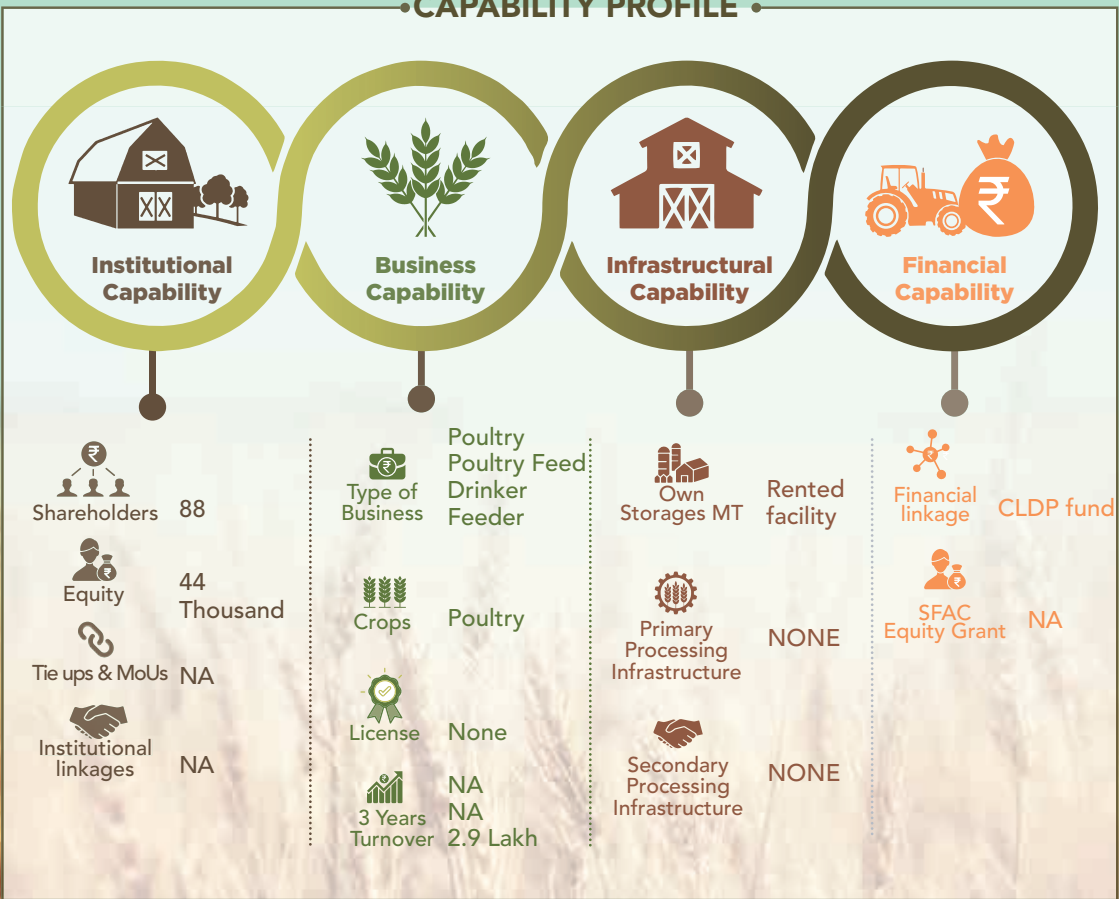
1



### Chairman

Kamla Tekam  
73548 66840

## •CAPABILITY PROFILE •



# Neshkala Crop Producer Company Limited



## About Us

Neshkala Crop Producer Company Limited was registered in 2006



## Location

Located in Guna block in Guna district in Madhya Pradesh

## Contact Details



### CEO

Gopesh Jain  
ncpcplguna@gmail.com  
9993040010



## Promoting Agency

Madhya Pradesh State Rural Livelihood Mission



## Number of Staff

5



## Chairman

Mungi Bai  
9313794848

## • CAPABILITY PROFILE •



### Institutional Capability

Shareholders 2035

Equity 29.0 Lakh

Tie ups & MoUs NA

Institutional linkages NA



### Business Capability

Type of Business Inputs & Seed Production

Crops Wheat, Gram Soybean

License All three Input Output Mandi

3 Years Turnover 2.70 Crore  
2.69 Crore  
27.2 Lakh



### Infrastructural Capability

Own Storages MT Owned

Primary Processing Infrastructure Grader

Secondary Processing Infrastructure None



### Financial Capability

Financial linkage IDBI - Rs. 70 Lakhs

SFAC Equity Grant NA



# Shivoham Mahila Aajeevika Farmer Producer Company Limited



## About Us

Shivoham Mahila Aajeevika Farmer Producer Company Limited was registered in 2021



## Location

Located in Bamori block in Guna district in Madhya Pradesh



## CEO

Azad Kirar  
smaspclbamori@gmail.com  
9630466613



## Promoting Agency

Madhya Pradesh State Rural Livelihood Mission



## Number of Staff

1



## Chairman

Chanda Bairagi  
7898603410

## •CAPABILITY PROFILE •



### Institutional Capability

	Shareholders	1000
	Equity	10 Lakh
	Tie ups & MoUs	NA
	Institutional linkages	NA



### Business Capability

	Type of Business	Inputs Business
	Crops	Coriander Wheat Mustard Maize
	License	Inputs (Chemical/fertilizers)
	3 Years Turnover	NA NA 5.50 Lakh



### Infrastructural Capability

	Own Storages MT	Rented facility
	Primary Processing Infrastructure	NONE
	Secondary Processing Infrastructure	NONE



### Financial Capability

	Financial linkage	NONE
	SFAC Equity Grant	10 Lakh

# Vasuprad Aajeevika Kisan Crop Producer Company Limited



## About Us

Vasuprad Aajeevika Kisan Crop Producer Company Limited was registered in 2021



## Location

Located in Bhitwar block in Gwalior district in Madhya Pradesh

## Contact Details



### CEO

Raghvendra Singh  
vasupradakcpcl@gmail.com  
7000048654



## Promoting Agency

Madhya Pradesh State Rural Livelihood Mission



## Number of Staff

3



### Chairman

Usha Rawat  
8815484287

## • CAPABILITY PROFILE •



### Institutional Capability

Shareholders 342

Equity 3.42 Lakh

Tie ups & MoUs NA

Institutional linkages NA



### Business Capability

Type of Business Inputs & Seed Production

Crops Paddy, Urad, Jowar, Bajra, Wheat

License Inputs (Chemical/ fertilizers)

3 Years Turnover NA  
11.50 Lakh  
NIL



### Infrastructural Capability

Own Storages MT Rented facility

Primary Processing Infrastructure NONE

Secondary Processing Infrastructure None



### Financial Capability

Financial linkage NONE

SFAC Equity Grant NA

# Revanchal Mahila Farmers Producer Company Limited



## About Us

Revanchal Mahila Farmers Producer Company Limited was registered in 2016



## Location

Located in Hosangabad block Hosangabad district in Madhya Pradesh

## Contact Details



### CEO

Amit Rajput  
revanchalmfpc@gmail.com  
9685366577



## Promoting Agency

Yukti Samajh Seva Samiti



## Number of Staff

1



## Managing Director

Sanjay Tiwari  
9993183229

## •CAPABILITY PROFILE •



### Institutional Capability

	Shareholders	500
	Equity	10 Thousand
	Tie ups & MoUs	NA
	Institutional linkages	NA



### Business Capability

	Type of Business	Inputs & Processing
	Crops	Wheat Gram, Paddy
	License	Inputs (Chemical/fertilizers)
	3 Years Turnover	25.71 Lakh 35.61 Lakh 37.00 Lakh



### Infrastructural Capability

	Own Storages MT	Rented Facility
	Primary Processing Infrastructure	NONE
	Secondary Processing Infrastructure	NONE



### Financial Capability

	Financial linkage	NONE
	SFAC Equity Grant	NA

# Ataheda Farmer Producer Company Limited



## About Us

Ataheda Farmer Producer Company Limited was registered in 2020



## Location

Located in Debalpur block in indore district in Madhya Pradesh

## Contact Details



### CEO

Abhishek fandan  
arunodaya\_94@  
yahoo.co.in  
9617502556



## Promoting Agency

Madhya Pradesh  
State Rural  
Livelihood Mission



## Number of Staff

NA



## Managing Director

Arjun Singh Power  
9993299540

## CAPABILITY PROFILE



### Institutional Capability

Shareholders 256

Equity 5.00 Lakh

Tie ups & MoUs NA

Institutional linkages NA



### Business Capability

Type of Business Input supply Soybean

Crops Potato,Wheat Onion Gram, Soybean

License Seed Pesticide Mandi Applied

3 Years Turnover NA  
NA  
NA



### Infrastructural Capability

Own Storages MT NONE

Primary Processing Infrastructure NONE

Secondary Processing Infrastructure NONE



### Financial Capability

Financial linkage NabKisan Rs. 5.50 lakhs

SFAC Equity Grant NA



# Maa Shipra Farmer Producer Company Limited



## About Us

Maa Shipra Farmer Producer Company Limited was registered in 2021



## Location

Located in Indore block in Indore district in Madhya Pradesh

## Contact Details



### CEO

Sarita Dehariya  
maashipra.fpc@gmail.com  
7440293544



## Promoting Agency

BAIF Institute for Sustainable Livelihoods and Development



## Number of Staff

3



## Managing Director


Rajesh Matholiya  
9977633689

## • CAPABILITY PROFILE •



### Institutional Capability

 Shareholders 301

 Equity 3.01 Lakh

 Tie ups & MoUs NA

 Institutional linkages NA



### Business Capability

 Type of Business NA

 Crops NA

 License NA

 3 Years Turnover NA  
NA  
NA



### Infrastructural Capability

 Own Storages MT  
rented facility

 Primary Processing Infrastructure NONE

 Secondary Processing Infrastructure NONE



### Financial Capability

 Financial linkage NONE

 SFAC Equity Grant 3.01 Lakh

# Maa Chandrabhaga Farmer Producer Company Limited



## About Us

Maa Chandrabhaga Farmer Producer Company Limited was registered in 2022



## Location

Located in Sanwer block in Indore district in Madhya Pradesh

## Contact Details



### CEO

Rohit Chouhan  
maachandrabhagafpc@gmail.com  
9044377925



## Promoting Agency

BAIF Institute for Sustainable Livelihoods and Development



## Number of Staff

2



## Managing Director


Shamkar Singh Tavar  
9926989389

## • CAPABILITY PROFILE •



### Institutional Capability

 Shareholders 364

 Equity 3.64 Lakh


 Tie ups & MoUs NA

 Institutional linkages NA



### Business Capability

 Type of Business NONE

 Crops Soybean

 License NONE

 3 Years Turnover NA  
NA  
NA



### Infrastructural Capability

 Own Storages MT NONE

 Primary Processing Infrastructure NONE

 Secondary Processing Infrastructure NONE



### Financial Capability

 Financial linkage NONE

 SFAC Equity Grant NA

# Tripur Sundari Ajivika Producer Company Limited



## About Us

Tripur Sundari Ajivika Producer Company Limited was registered in 2021



## Location

Located in Jabalpur block in Jabalpur district in Madhya Pradesh

## Contact Details



### CEO

Gaurav Vishwakarma  
tripursundari85@gmail.com  
8823020013



## Promoting Agency

Madhya Pradesh State Rural Livelihood Mission



## Number of Staff

2



### Chairman

Kalpna Patel  
7898636871

## •CAPABILITY PROFILE •



### Institutional Capability



Shareholders 318



Equity 3.50 Lakh



Tie ups & MoUs Yes



Institutional linkages Dehaat



### Business Capability



Type of Business Inputs



Crops Wheat  
Gram  
Pulses



Inputs (Chemical/ fertilizers)



3 Years Turnover NA  
NA  
9.50 Lakh



### Infrastructural Capability



Own Storages MT Rented facility



Primary Processing Infrastructure NONE



Secondary Processing Infrastructure NONE



### Financial Capability



Financial linkage NONE



SEAC Equity Grant NA

# Shivmahima Ajivika Producer Company Limited



## About Us

Shivmahima Ajivika Producer Company Limited was registered in 2021



## Location

Located in Jabalpur block in Jabalpur district in Madhya Pradesh

## Contact Details



### CEO

Rakesh Bathre  
shivmahima232@gmail.com  
8319190260



## Promoting Agency

Madhya Pradesh State Rural Livelihood Mission



## Number of Staff

2



### Chairman

Smith Aaradhna Dubey  
798779089

## • CAPABILITY PROFILE •



### Institutional Capability



Shareholders 310



Equity 3.50 Lakh



Tie ups & MoUs Yes



Institutional linkages Bio-enzyme



### Business Capability



Type of Business Inputs



Crops Paddy, Pea, Pulse, Wheat



License All three Input Output Mandi



3 Years Turnover NA  
NA  
16.84 Lakh



### Infrastructural Capability



Own Storages MT rented facility



Primary Processing Infrastructure NONE



Secondary Processing Infrastructure NONE



### Financial Capability



Financial linkage NONE



SFAC Equity Grant NA



# Maa Reva Kisan Utpadak Producer Company Limited



## About Us

Maa Reva Kisan Utpadak Producer Company Limited was registered in 2021



## Location

Located in Patan block in Jabalpur district in Madhya Pradesh

## Contact Details



### CEO

Rahul Singh  
rema99757@gmail.com  
7999145352



## Promoting Agency

ISED



## Number of Staff

2



## Managing Director


Utta Singh Lodhi  
9926540864

## •CAPABILITY PROFILE •



### Institutional Capability

  
Shareholders 310

  
Equity 3.00 Lakh

  
Tie ups & MoUs NA

  
Institutional linkages NA



### Business Capability

  
Type of Business Inputs

  
Crops Green Pea

  
License Input and FSSAI

  
3 Years Turnover NA  
NA  
NA



### Infrastructural Capability

  
Own Storages MT Rented Facility

  
Primary Processing Infrastructure NONE

  
Secondary Processing Infrastructure NONE



### Financial Capability

  
Financial linkage NONE

  
SFAC Equity Grant 3 Lakh

# Maa-Virasan Farmers Producer Company Limited



## About Us

Maa-Virasan Farmers Producer Company Limited was registered in 2021



## Location

Located in Sehora block in Jabalpur district in Madhya Pradesh

## Contact Details



### CEO

Arvind Patel  
mavirashanfpo@gmail.com  
7974135259



## Promoting Agency

ICED



## Number of Staff

2



## Managing Director

Hemchand Asati  
9424675036

## • CAPABILITY PROFILE •



### Institutional Capability

 Shareholders 500


 Equity 5.00 Lakh


 Tie ups & MoUs NA


 Institutional linkages NA



### Business Capability

 Type of Business Inputs Pashu Feed

 Crops Animal feed

 License Inputs (Chemical/ fertilizers)


 3 Years Turnover NA  
NA  
NA



### Infrastructural Capability

 Own Storages MT Rented facility

 Primary Processing Infrastructure NONE

 Secondary Processing Infrastructure NONE



### Financial Capability

 Financial linkage NONE

 SFAC Equity Grant 3.26 Lakh

# Pitol Tribal Farmers Producer Company Limited



## About Us

Pitol Tribal Farmers Producer Company Limited was registered in 2015



## Location

Located in Pitol block in Jhabua district in Madhya Pradesh

## Contact Details



### CEO

Prakash Jamunia  
p.jamuniya@asabhopal.org  
9425969634



## Promoting Agency

Madhya Pradesh State Rural Livelihood Mission



## Number of Staff

1



### Chairman

Sakuntala Damor  
9340985996

## •CAPABILITY PROFILE •



### Institutional Capability

	Shareholders	843
	Equity	6.52 Lakh
	Tie ups & MoUs	NA
	Institutional linkages	NA



### Business Capability

	Type of Business	Inputs Business
	Crops	Soybean Cotton Wheat
	License	Both Input & Mandi
	3 Years Turnover	59.71 Lakh 56.49 Lakh 1.49 Crore



### Infrastructural Capability

	Own Storages MT	Rented facility
	Primary Processing Infrastructure	NONE
	Secondary Processing Infrastructure	NONE



### Financial Capability

	Financial linkage	NONE
	SFAC Equity Grant	18.20 Lakh

# Samradh Agri Farmer Producer Company Limited



## About Us

Samradh Agri Farmer Producer Company Limited was registered in 2021



## Location

Located in Petlawad block in Jhabua district in Madhya Pradesh



## Contact Details



### CEO

Mukesh garwal  
samradhagri@gmail.com  
8817897561



## Promoting Agency

NABARD



## Number of Staff

2



## Chairman


Reeta Garwal  
8889057399

## CAPABILITY PROFILE



### Institutional Capability

 Shareholders 338

 Equity 35.2 Thousand


 Tie ups & MoUs NA

 Institutional linkages NA



### Business Capability

 Type of Business Input Business

 Crops Soybean

 License Input (Seed, Fertilizer, Pesticide)

 3 Years Turnover NA  
NA  
5.00 LAKH



### Infrastructural Capability

 Own Storages MT Owned

 Primary Processing Infrastructure Grader

 Secondary Processing Infrastructure None



### Financial Capability

 Financial linkage NONE

 SFAC Equity Grant 3.38 Lakh



# KPCL Farmer Producer Company Limited



## About Us

KPCL Farmer Producer Company Limited was registered in 2021



## Location

Located in Khandwa block in the Khandwa district in Madhya Pradesh

## Contact Details



### CEO

HN Malviya  
kp145565@gmail.com  
9691953404



## Promoting Agency

BAIF Institute for Sustainable Livelihoods and Development



## Number of Staff

4



## Managing Director

Kamesh Patel  
9753702195

## • CAPABILITY PROFILE •



### Institutional Capability

	Shareholders	354
	Equity	3.54 Lakh
	Tie ups & MoUs	NA
	Institutional linkages	NA



### Business Capability

	Type of Business	Inputs
	Crops	Onion
	License	Inputs (Chemical/ fertilizers)
	3 Years Turnover	NA NA NA



### Infrastructural Capability

	Own Storages MT	Rented facility
	Primary Processing Infrastructure	NONE
	Secondary Processing Infrastructure	NONE



### Financial Capability

	Financial linkage	NONE
	SFAC Equity Grant	3.08 Lakh

# Satpuda Jaivik Producer Company Limited



## About Us

Satpuda Jaivik Producer Company Limited was registered in 2020



## Location

Located in Khalwa block in Khandwa (East Nimar) district in Madhya Pradesh

## Contact Details



### CEO

Vishal Shukla  
thewin007@gmail.com  
9644644125



## Promoting Agency

NABARD



## Number of Staff

25



### Chairman

Vaibhav Shukla  
7747899187  
9131152465

## • CAPABILITY PROFILE •



### Institutional Capability

	810
Shareholders	
	9.28
Equity	Lakh
	NA
Tie ups & MoUs	
	NA
Institutional linkages	



### Business Capability

	Input supply
Type of Business	Soybean & Maize Procurement
	Wheat
Crops	
	Pesticide Fertilizer, IEC
License	GST RCMC, NCDEX Udhog Aadhar, FSSAI Mandi
	3.96 Lakh
3 Years Turnover	1.21 Crore
	1.43 Crore



### Infrastructural Capability

	OWNED
Own Storages MT	
	NONE
Primary Processing Infrastructure	
	NONE
Secondary Processing Infrastructure	



### Financial Capability

	NONE
Financial linkage	
	NA
SFAC Equity Grant	

# Sant Vedanti Farmer Producer Company Limited



## About Us

Sant Vedanti Farmer Producer Company Limited was registered in 2021



## Location

Located in Punasa block in Khandwa district in Madhya Pradesh



## CEO

Vijendra Singh Bhaskare  
Santvedantipcl@gmail.com  
9399012129



## Promoting Agency

NABARD



## Number of Staff

3



## Chairman

Krishna pal Singh  
6263776756

## CAPABILITY PROFILE



### Institutional Capability



Shareholders 306



Equity 3.06 Lakh



Tie ups & MoUs NA



Institutional linkages Output



### Business Capability



Type of Business

Inputs (Seed  
fertilizer  
pesticide)  
Mineral  
Mixture for  
Cattle



Crops

NA



License

Input (Seed,  
Fertilizer,  
Pesticide)



3 Years  
Turnover NA  
NA  
5.00 Lakh



### Infrastructural Capability



Own Storages MT

Rented facility



Primary Processing Infrastructure

NONE



Secondary Processing Infrastructure

NONE



### Financial Capability



Financial linkage

NONE



SFAC  
Equity Grant NA

# Kanha Krishi Vanopaj Producer Company Limited



## About Us

Kanha Krishi Vanopaj Producer Company Limited was registered in 2011



## Location

Located in Mandla block in Mandla district in Madhya Pradesh

## Contact Details



### CEO

Ranjeet Kuchhwaha  
kanha.kbpc@gmail.com  
9425852002



## Promoting Agency

SRLM



## Number of Staff

2



## Chairman

Laxmi Bhanware  
930218474

## • CAPABILITY PROFILE •



### Institutional Capability

	Shareholders	744
	Equity	4.34 Lakh
	Tie ups & MoUs	25 Lakh
	Institutional linkages	Output



### Business Capability

	Type of Business	Inputs & Outputs
	Crops	Jaggery Kodo Kutki Paddy
	License	Both Input & Mandi
	3 Years Turnover	15.00 Lakh 1.55 Crore 18.50 Lakh



### Infrastructural Capability

	Own Storages	MT	Owned
	Primary Processing Infrastructure		NONE
	Secondary Processing Infrastructure		NONE



### Financial Capability

	Financial linkage	Samunnati- Rs.5 Lakhs
	SFAC Equity Grant	25 Lakh



# Mandla Tribal Farmer Producer Company Limited



## About Us

Mandla Tribal Farmer Producer Company Limited was registered in 2012



## Location

Located in Lingapodi block in Mandla district in Madhya Pradesh

## Contact Details



### CEO

Sarad Mishra  
mahishmatifpc@gmail.com  
9424917499



## Promoting Agency

ASA



## Number of Staff

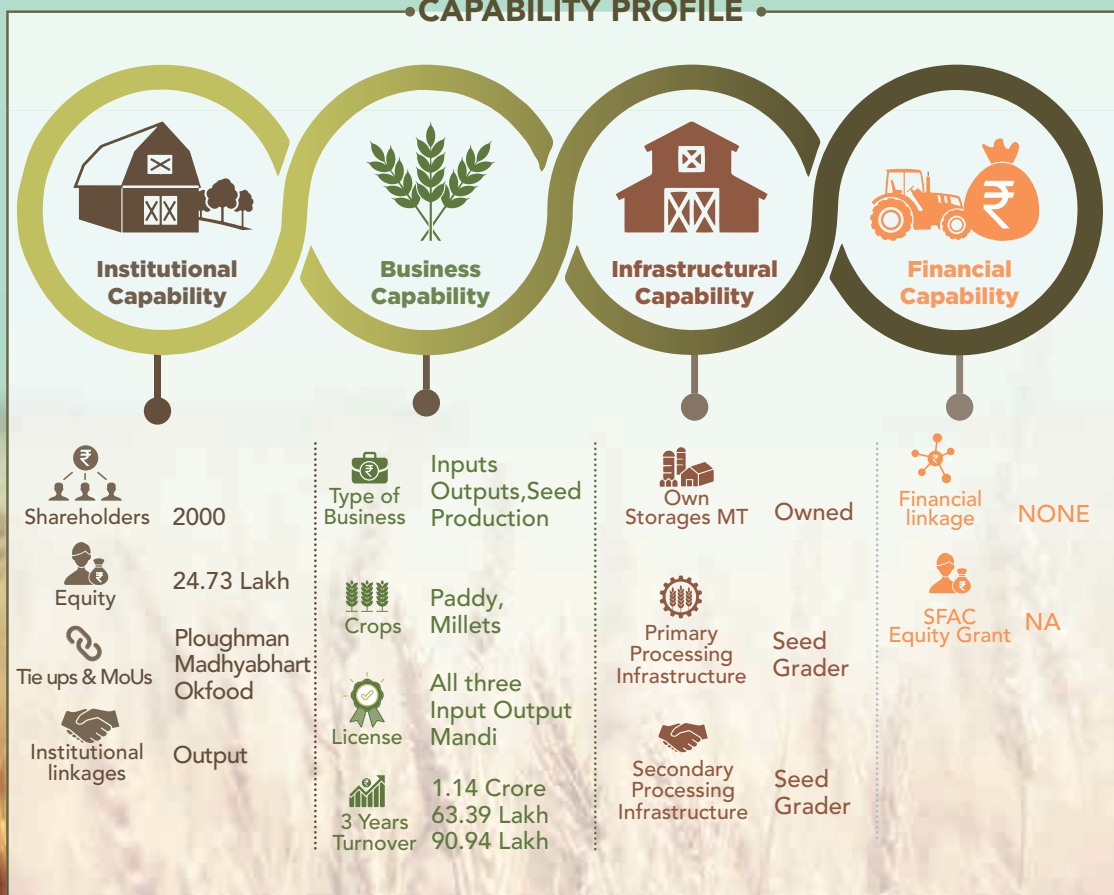
2



### Chairman

Kunnulal Nanda  
7697314278

## •CAPABILITY PROFILE •



# Maheshmati Tribal Farmer Producer Company Limited



## About Us

Maheshmati Tribal Farmer Producer Company Limited was registered in 2015



## Location

Located in Bamori block in Mandla district in Madhya Pradesh

## Contact Details



### CEO

Vipin Patel  
mahishmatifpc@gmail.com  
7869004020



## Promoting Agency

ASA



## Number of Staff

2



## Chairman


Muniya  
9770116703


## • CAPABILITY PROFILE •



### Institutional Capability

 Shareholders 1085

 Equity 12.83 Lakh

 Tie ups & MoUs Ploughman


 Institutional linkages Output




### Business Capability

 Type of Business Inputs-Output-Seed Production

 Crops Paddy, Wheat Millets, Maize

 License All three Input Output Mandi

 3 Years Turnover 28.27 Lakh  
24.16 Lakh  
26.53 Lakh



### Infrastructural Capability

 Own Storages MT Rented facility

 Primary Processing Infrastructure Grading Machine, Rice Mill

 Secondary Processing Infrastructure Grading Machine, Rice Mill



### Financial Capability

 Financial linkage NONE

 SFAC Equity Grant NA

# Mohgaon Mahila Kisan Crop Producer Company Limited



## About Us

Mohgaon Mahila Kisan Crop Producer Company Limited was registered in 2016



## Location

Located in Mohgaon block in Mandla district in Madhya Pradesh

## Contact Details



### CEO

Umesh Soni  
mwgpcl2016@gmail.com  
9406773279



## Promoting Agency

MKSP, Pradan



## Number of Staff

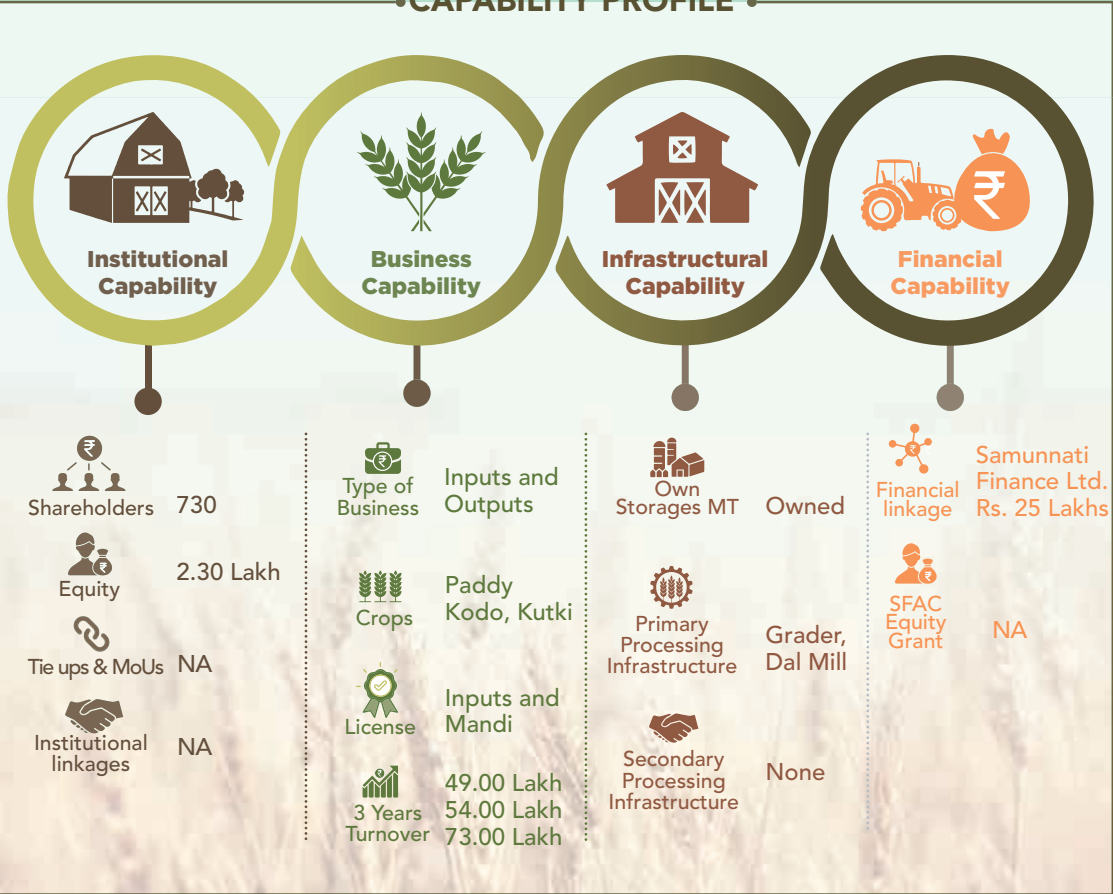
7



## Chairman

Harivati Marabi  
7909990094

## •CAPABILITY PROFILE •



# Malwa Garlic Agro Producer Company Limited



## About Us

Malwa Garlic Agro Producer Company Limited was registered in 2021



## Location

Located in Mandsour block in Mandsour district in Madhya Pradesh

## Contact Details



### CEO

Pinkesh Patidar  
pinkeshpatidar37@gmail.com  
9977765504



## Promoting Agency

Madhya Bharat Consortium of Farmers Producer Company Ltd.



## Number of Staff

1



## Managing Director

Vijay Kumawat  
6265422921

## CAPABILITY PROFILE



### Institutional Capability

	Shareholders	300
	Equity	2.13 Lakh
	Tie ups & MoUs	NA
	Institutional linkages	NA



### Business Capability

	Type of Business	Inputs
	Crops	Garlic
	License	Mandi
	3 Years Turnover	NA NA NA



### Infrastructural Capability

	Own Storages MT	Rented facility
	Primary Processing Infrastructure	NONE
	Secondary Processing Infrastructure	NONE



### Financial Capability

	Financial linkage	NONE
	SFAC Equity Grant	NA



# Arunodaya Kisan Beej Avam Krishi Adan Vipran Sahkari Samiti Malahargarh



## About Us

Arunodaya Kisan Beej Avam Krishi Adan Vipran Sahkari Samiti Malahargarh was registered in 2016



## Location

Located in Malhargad block in Mandsaur district in Madhya Pradesh

## Contact Details



**CEO**  
Praveen Sharma  
kishorpatidar@95759.com  
8319554287



## Promoting Agency

NA



## Number of Staff

1

## •CAPABILITY PROFILE •



# Dauji Maharaj (Chambal) Mahila Kisan Producer Company Limited



## About Us

Dauji Maharaj (Chambal) Mahila Kisan Producer Company Limited was registered in 2021



## Location

Located in Morena block in Morena district in Madhya Pradesh

## Contact Details



### CEO

Saksham Tiwari  
8755763631



## Promoting Agency

SRLM



## Number of Staff

14

## CAPABILITY PROFILE



### Institutional Capability

	Shareholders	1500
	Equity	1.03 Crore
	Tie ups & MoUs	NA
	Institutional linkages	NA



### Business Capability

	Type of Business	Inputs & Outputs
	Crops	Bajra Mustard
	License	All three Input Output Mandi
	3 Years Turnover	NA 6.5 Lakh 53.5 Lakh



### Infrastructural Capability

	Storages MT	Rented facility
	Primary Processing Infrastructure	NONE
	Secondary Processing Infrastructure	NONE



### Financial Capability

	Financial linkage	NONE
	SFAC Equity Grant	1.03 Crores

# Shakti Pooja Mahila Kisan Producer Company Limited



## About Us

Shakti pooja mahila kisan producer company limited was registered in 2021



## Location

Located in Kareli block in Narsinghpur district in Madhya Pradesh



## Contact Details



### CEO

Jagdish Prasad Mehra  
shaktipoojamahilafpo@gmail.com  
9425469291



## Promoting Agency

Madhya Pradesh  
State Rural  
Livelihood Mission



## Number of Staff

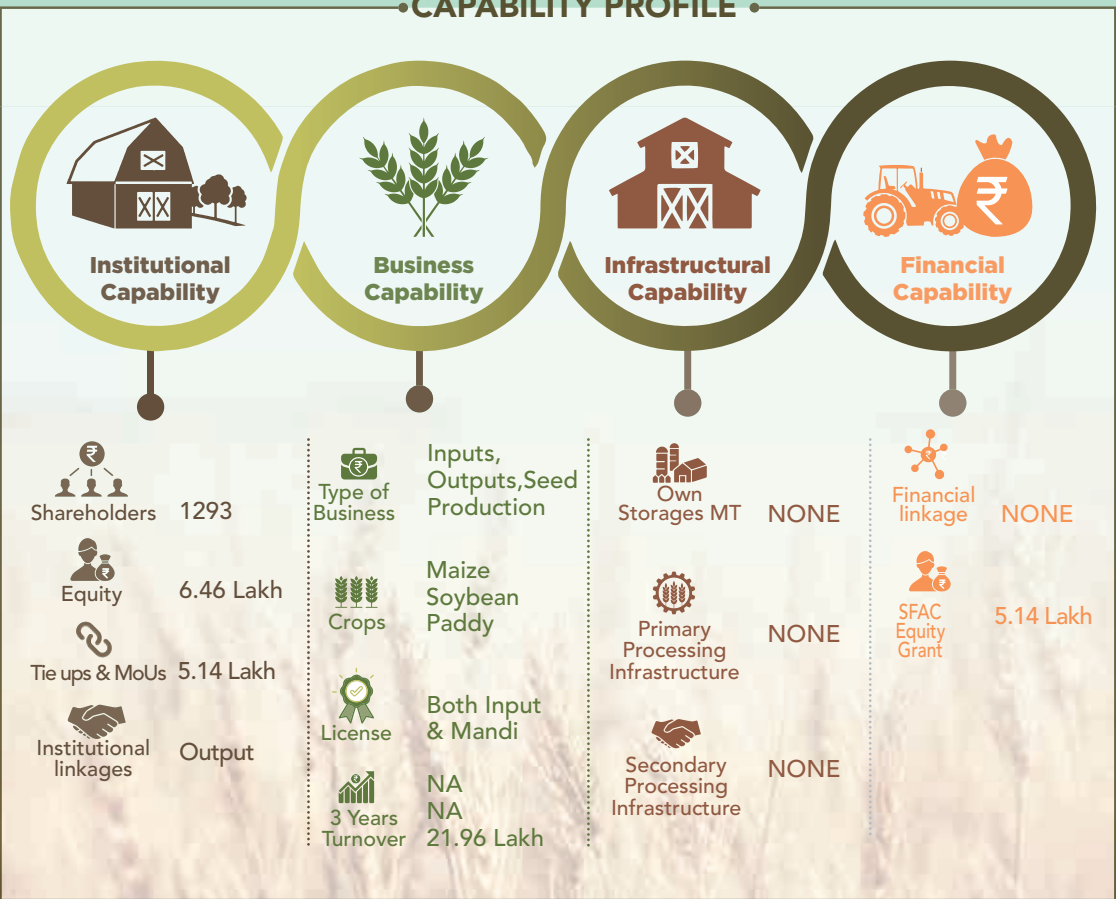
2



### Chairman

Rajni Sarahte  
7354461081

## •CAPABILITY PROFILE •



# Narsingh Farmers Crop Producer Company Pvt. Limited



## About Us

Narsingh Farmers Crop Producer Company Pvt. Limited was registered in 2006



## Location

Located in Narsingpur block in Narsinghpur district in Madhya Pradesh

## Contact Details



### CEO

Doulat Mehra  
ceo.nfcpcpl@gmail.com  
9926628610



## Promoting Agency

DPIP



## Number of Staff

6



### Chairman

Imrat Singh Rajpoot  
9165266330

## • CAPABILITY PROFILE •



### Institutional Capability



Shareholders 2872



Equity 11.90 Lakh



Tie ups & MoUs  
Bajaji  
Saraswati  
Sortex, Bajranj  
Shri Balaji



Institutional linkages  
Output



### Business Capability



Type of Business  
Inputs and Outputs



Crops  
Wheat, Gram  
Lentil, Tur



License  
Both Input  
and Mandi



3 Years  
Turnover  
5.31 Crore  
7.04 Crore  
9.79 Crore



### Infrastructural Capability



Own Storages MT  
Owned



Primary  
Processing  
Infrastructure  
NONE



Secondary  
Processing  
Infrastructure  
NONE



### Financial Capability



Financial linkage  
Kishandhan  
Rs. 3 Lakhs



SFAC  
Equity  
Grant  
NA



# Narsinghpur Eco Foods Producer Company Limited



## About Us

Narsinghpur Eco Foods Producer Company Limited was registered in 2021



## Location

Located in Chhaparpatha block in Narsinghpur district in Madhya Pradesh

## Contact Details



### CEO

Subodh Tamrkar  
necofcompanylimited@gmail.com  
9425033274



## Promoting Agency

Rural Environment Development Society



## Number of Staff

2



## Managing Director


Vijay Pratap Singh  
9669044099

## •CAPABILITY PROFILE •



### Institutional Capability

  
Shareholders 226

  
Equity 4.52 Lakh

  
Tie ups & MoUs NA

  
Institutional linkages NA




### Business Capability

  
Type of Business Input & Jaggery

  
Crops Sugarcane  
Green gram  
Wheat

  
License Inputs (Chemical/ fertilizers)

  
3 Years Turnover NA  
NA  
12.50 Lakh



### Infrastructural Capability

  
Own Storages MT Rented facility

  
Primary Processing Infrastructure NONE

  
Secondary Processing Infrastructure NONE



### Financial Capability

  
Financial linkage NONE

  
SFAC Equity Grant NA

# Karnawati Agriculture Producer Company Limited



## About Us

Karnawati Agriculture Producer Company Limited was registered in 2006



## Location

Located in Panna block in Panna district in Madhya Pradesh

## Contact Details



### CEO

Nidhi Panday  
pckarnabati@  
radiffmailcom  
9406904769



## Promoting Agency

DPIP



## Number of Staff

4



### Chairman

Ramkaran Patil  
9165682829

## • CAPABILITY PROFILE •



### Institutional Capability

Shareholders 3061

Equity 10 Lakh

Tie ups & MoUs Samunnati  
Star Agri  
Ageinext

Institutional linkages Output



### Business Capability

Type of Business Inputs & Outputs

Crops Wheat, Gram  
Paddy, Urad

License Both Input  
and Mandi

3 Years Turnover 1.46 Crore  
13.84 Lakh  
99.42 Lakh



### Infrastructural Capability

Own Storages MT Owned

Primary Processing Infrastructure NONE

Secondary Processing Infrastructure NONE



### Financial Capability

Financial linkage NONE

SFAC Equity Grant NA

# Begamganj Atmnirbhar Kisan Producer Company Limited



## About Us

Begamganj Atmnirbhar Kisan Producer Company Limited was registered in 2021



## Location

Located in Begamganj block in Raisena district in Madhya Pradesh



## Contact Details



### CEO

Shivanshu Parihar  
bakcpl9@gmail.com  
8103262636



## Promoting Agency

SFAC



## Number of Staff

3



### Chairman

Ramrati Lodhi  
6260888526

## •CAPABILITY PROFILE •



# Lavkush Crop Producer Company Pvt Limited



## About Us

Lavkush Crop Producer Company Pvt Limited was registered in 2006



## Location

Located in Gairatganj block in Raisen district in Silwani Madhya Pradesh

## Contact Details



### CEO

Mohar Singh  
lkcp1.2006@rediffmail.com  
9893940819



## Promoting Agency

DPIP



## Number of Staff

1



### Chairman

Parmeswar Das Kushwah  
8120162498

## CAPABILITY PROFILE



### Institutional Capability

Shareholders 2001

Equity 2.00 Lakh

Tie ups & MoUs NA

Institutional linkages Output



### Business Capability

Type of Business Inputs Business

Crops Soybean Paddy

License Both Input and Mandi

3 Years Turnover 11.50 Lakh  
9.73 Lakh  
4.21 Lakh



### Infrastructural Capability

Own Storages MT Owned

Primary Processing Infrastructure NONE

Secondary Processing Infrastructure NONE



### Financial Capability

Financial linkage NONE

SFAC Equity Grant NA



# Khujner Agriculture Producer Company Limited



## About Us

Khujner Agriculture Producer Company Limited was registered in 2006



## Location

Located in Rajgarh block in the Rajgarh district Madhya Pradesh



## CEO

Ramesh Nagar  
kapcl2006@gmail.com  
9977328149,9926387712  
8889002004



## Promoting Agency

DPIP



## Number of Staff

2



## Chairman

Bhrat Singh Nagar  
9926387712

### • CAPABILITY PROFILE •



#### Institutional Capability

	Shareholders	3081
	Equity	3.81 Lakh
	Tie ups & MoUs	NA
	Institutional linkages	Output



#### Business Capability

	Type of Business	Inputs and Seed Production
	Crops	Wheat Soybean
	License	Both Input & Mandi
	3 Years Turnover	25.12 Lakh 24.68 Lakh 24.96 Lakh



#### Infrastructural Capability

	Own Storages MT	Owned
	Primary Processing Infrastructure	NONE
	Secondary Processing Infrastructure	NONE



#### Financial Capability

	Financial linkage	NONE
	SFAC Equity Grant	NA

# Teothar Agro Farmer Producer Company Limited



## About Us

Teothar Agro Farmer Producer Company Limited was registered in 2021



## Location

Located in Teothar block in Rewa district in Madhya Pradesh

## Contact Details



### CEO

Pushpendra Singh  
teotherfpo1@gmail.com  
7000616618



## Promoting Agency

NABARD



## Number of Staff

5



### Chairman


Yogesh Tiwari  
9713087702

## • CAPABILITY PROFILE •



### Institutional Capability

  
Shareholders 310

  
Equity 4.00 Lakh

  
Tie ups & MoUs NA


  
Institutional linkages NA




### Business Capability

  
Type of Business Inputs

  
Crops NONE

  
License Seed  
Fertilizer  
Pesticides  
E-Naam

  
3 Years Turnover NA  
NA  
8.00 Lakh



### Infrastructural Capability

  
Own Storages MT Owned

  
Primary Processing Infrastructure NONE

  
Secondary Processing Infrastructure NONE



### Financial Capability

  
Financial linkage NONE

  
SFAC Equity Grant NA

# Vindhyanchal Crop Producer Company Limited



## About Us

Vindhyanchal Crop Producer Company Limited was registered in 2012



## Location

Located in Sirmour block in Rewa district Madhya Pradesh

## Contact Details



### CEO

Sarvesh Singh  
Vcpclk@Gmail.com  
6263196675



## Promoting Agency

NABARD



## Number of Staff

5



### Chairman


Devendra Tripathi  
6268635787

## •CAPABILITY PROFILE •



### Institutional Capability

 Shareholders 1056


 Equity 10 Lakh

 Tie ups & MoUs Yes


 Institutional linkages Samunati Agro Solution pvt.ltd



### Business Capability

 Type of Business Input Trading, Gram Lentils linseed,Urad Moong,Kodo

 Crops Wheat


 License Seed license fertilizer Mandi,FSSAI Pesticide etc.


 3 Years Turnover 62.74 Lakh  
72.14 Lakh  
1.65 Crore



### Infrastructural Capability


 Own Storages MT Rented Facility

 Primary Processing Infrastructure Seed Grader Gravity Separator Elevator, 2 MT per hour

 Secondary Processing Infrastructure NONE



### Financial Capability

 Financial linkage NabKisan Finance Limited-Rs.40 Lakhs SBI CC limit-Rs.11 Lakhs

 SFAC Equity Grant NA

# NaiGarhi Millets Farmer Producer Company Limited



## About Us

NaiGarhi Millets Farmer Producer Company Limited was registered in 2019



## Location

Located in Naigarhi block in Rewa district in Madhya Pradesh

## Contact Details



### CEO

Nandlal Saket  
stutidf@gmail.com  
9174406467



## Promoting Agency

Stuti Development Foundation



## Number of Staff

1



## Chairman


Ramadhar Sukla  
8318090967

## CAPABILITY PROFILE



### Institutional Capability

  
Shareholders 800

  
Equity 3.00 Lakh

  
Tie ups & MoUs NA

  
Institutional linkages NA



### Business Capability

  
Type of Business Inputs & Processing

  
Crops Spice Wheat

  
License Input & FSSAI

  
3 Years Turnover NA  
1.20 Lakh  
1.35 Lakh



### Infrastructural Capability

  
Own Storages MT Rented facility

  
Primary Processing Infrastructure NONE

  
Secondary Processing Infrastructure NONE



### Financial Capability

  
Financial linkage NONE

  
SFAC Equity Grant NA



# Gofarm Producer Company Limited



## About Us

Gofarm Producer Company Limited was registered in 2020



## Location

Located in Semariya block in Rewa district in Madhya Pradesh

## Contact Details



### CEO

Brijendra Tripathi  
gofarmpcl@gmail.com  
7974150918



## Promoting Agency

Krishna Samaj  
Utthan Samiiti



## Number of Staff

6



## Managing Director

Rajkumar Mishra  
9200243665

## •CAPABILITY PROFILE •



# Bundelkhand Mahila Kisan Producer Company Limited



## About Us

Bundelkhand Mahila Kisan Producer Company Limited was registered in 2021



## Location

Located in Ghara Kota block in Sagar district in Madhya Pradesh

## Contact Details



### CEO

Anuj Tripathi  
bmkpclgarhakota@gmail.com  
9650330392



## Promoting Agency

Madhya Pradesh State Rural Livelihood Mission



## Number of Staff

2



### Chairma

Reena Ahirwar  
7805812808

## • CAPABILITY PROFILE •



### Institutional Capability

Shareholders 500

Equity 5.00 Lakh

Tie ups & MoUs Agri Bazar  
Milkano Dehaat  
E-Dwara

Institutional linkages Output



### Business Capability

Type of Business Inputs & Outputs

Crops Spice, Wheat

License Both Input and Mandi

3 Years Turnover NA  
0.00  
53.2Thousand



### Infrastructural Capability

Own Storages MT Rented facility

Primary Processing Infrastructure NONE

Secondary Processing Infrastructure NONE



### Financial Capability

Financial linkage Samunnati Rs.10Lakhs

SFAC Equity Grant NA

# Moti Narayan Sarkar Farmer Producer Company Limited



## About Us

Moti Narayan Sarkar Farmer Producer Company Limited was registered in 2021



## Location

Located in Deori block in Sagar district in Madhya Pradesh

## Contact Details



### CEO

Manshi Tiwari  
motisarkarfpo29@gmail.com  
6260202424



## Promoting Agency

IFDDC



## Number of Staff

1



## Managing Director

Rajnish Mishra  
9425450853

## •CAPABILITY PROFILE •



### Institutional Capability



Shareholders 366



Equity 5.06 Lakh  
Samunnati Agro Solution Private limited



Tie ups & MoUs  
Institutional linkages NA



### Business Capability



Type of Business Trading & Input



Crops Onion Garlic



License Both Input and Mandi



3 Years Turnover NA  
NA  
NA



### Infrastructural Capability



Own Storages MT Rented facility



Primary Processing Infrastructure NONE



Secondary Processing Infrastructure NONE



### Financial Capability



Financial linkage NONE



SFAC Equity Grant 4.11 Lakh

# Udyamsheel Agro Farmers Producer Company Limited



## About Us

Udyamsheel Agro Farmers Producer Company Limited was registered in 2021



## Location

Located in Majhgavan block in Satna district in Madhya Pradesh

## Contact Details



### CEO

Vijay Kumar Dwivedi  
udyamsheelfpomjg@gmail.com  
7678520300



## Promoting Agency

NABARD



## Number of Staff

2



### Chairman

Rajkumar Jaiswal  
8517866100

## • CAPABILITY PROFILE •



### Institutional Capability

	Shareholders	520
	Equity	4.68 Lakh
	Tie ups & MoUs	NA
	Institutional linkages	NA



### Business Capability

	Type of Business	Input
	Crops	NONE
	Seeds Fertilizer Pesticides	License
	3 Years Turnover	NA NA 1.50 Lakh



### Infrastructural Capability

	Own Storages MT	Owned
	Primary Processing Infrastructure	NONE
	Secondary Processing Infrastructure	NONE



### Financial Capability

	Financial linkage	NONE
	SFAC Equity Grant	3.4 Lakh



# Lokfarm Farmer Producer company Limited



## About Us

Lokfarm Farmer Producer company Limited was registered in 2022



## Location

Located in Rampur Baghelan block in Satna district in Madhya Pradesh



## CEO

Amit Kumar Singh  
lokfarmfarmer@gmail.com  
9522622383



## Promoting Agency

Anupama Education Society



## Number of Staff

2



## Managing Director

Sankalp Singh  
7387077771

### • CAPABILITY PROFILE •



#### Institutional Capability



Shareholders 300



Equity 3.50 Lakh



Tie ups & MoUs NA



Institutional linkages NA



#### Business Capability



Type of Business Inputs



Crops Wheat, Gram Paddy



License Inputs



3 Years Turnover NA  
NA  
NA



#### Infrastructural Capability



Own Storages MT Rented



Primary Processing Infrastructure NONE



Secondary Processing Infrastructure NONE



#### Financial Capability



Financial linkage NONE



SFAC Equity Grant NA

# Somnadi Farmer Producer Company Limited



## About Us

Somnadi Farmer Producer Company Limited was registered in 2022



## Location

Located in Jaisinghnagar block in Shahdol district in Madhya Pradesh

## Contact Details



### CEO

Virendra Maley  
S.mishra@asabhopal.org  
9691970404



## Promoting Agency

NABARD



## Number of Staff

2



### Chairman


Kamta Singh Paraste  
6264848609

## CAPABILITY PROFILE



### Institutional Capability

 Shareholders 322

 Equity 3.38 Lakh

 Tie ups & MoUs NA

 Institutional linkages NA



### Business Capability

 Type of Business Inputs Trading

 Crops NONE

 License Inputs, Mandi


 3 Years Turnover NA  
2.70 Lakh  
1.80 Lakh



### Infrastructural Capability

 Own Storages MT NONE

 Primary Processing Infrastructure Turmeric Processing Machine

 Secondary Processing Infrastructure NONE



### Financial Capability

 Financial linkage NONE

 SFAC Equity Grant 1.59 Lakh

# Mahila Kisan Crop Producer Company Limited



## About Us

Mahila Kisan Crop Producer Company Limited was registered in 2021



## Location

Located in Sehore block in Sehore district in Madhya Pradesh

## Contact Details



### CEO

Vijay Goyal  
mkcpcsehore2021@gmail.com  
9826310909



## Promoting Agency

Madhya Pradesh State Rural Livelihood Mission



## Number of Staff

2



### Chairman

Surbhi Sharma  
9098471426

## CAPABILITY PROFILE



### Institutional Capability

	Shareholders	1000
	Equity	10.0 Lakh
	Tie ups & MoUs	ITC Agribajar Dehaat
	Institutional linkages	Output



### Business Capability

	Type of Business	Inputs & Outputs
	Crops	Wheat, Soybean
	License	Both Input and Mandi
	3 Years Turnover	NA 4.00 Lakh 10.0 Lakh



### Infrastructural Capability

	Own Storages MT	Owned
	Primary Processing Infrastructure	NONE
	Secondary Processing Infrastructure	NONE



### Financial Capability

	Financial linkage	NONE
	SFAC Equity Grant	NA

# Kartikey Aajeevika Farmer Producer Company Limited



## About Us

Kartikey Aajeevika Farmer Producer Company Limited was registered in 2021



## Location

Located in Nasrullahganj block in Sahore district in Madhya Pradesh

## Contact Details



### CEO

Ashish Yadav  
kartikeymahilanasula  
ganj@gmail.com  
9770974198



## Promoting Agency

Madhya Pradesh  
State Rural  
Livelihood Mission



## Number of Staff

1



### Chairman

Vimla Bai  
95750442889

## • CAPABILITY PROFILE •



### Institutional Capability

	Shareholders	1000
	Equity	10.0 Lakh
	Tie ups & MoUs	NA
	Institutional linkages	NA



### Business Capability

	Type of Business	None
	Crops	Moong Soybean Maize Paddy
	Inputs (Chemical/ fertilizers)	NA
	License	NA
	3 Years Turnover	NA



### Infrastructural Capability

	Own Storages MT	Owned
	Primary Processing Infrastructure	NONE
	Secondary Processing Infrastructure	NONE



### Financial Capability

	Financial linkage	NONE
	SFAC Equity Grant	NA



# Aatm Nirbhar Mahila Farmer Producer Company Limited



## About Us

Aatm Nirbhar Mahila Farmer Producer Company Limited was registered in 2021



## Location

Located in Icchawar block in Sehore district in Baghelan Madhya Pradesh

## Contact Details



### CEO

Anil Rangot  
anil.rangot123@gmail.com  
8982137913



## Promoting Agency

Madhya Pradesh State Rural Livelihood Mission



## Number of Staff

1



### Chairman

Pooja Tyagi  
7389648821

## • CAPABILITY PROFILE •



### Institutional Capability



Shareholders 1000



Equity 10.0 Lakh



Tie ups & MoUs YES



Institutional linkages ITC



### Business Capability



Type of Business Inputs & Outputs



Crops Soybean



License Both Input and Mandi



3 Years Turnover NA  
NA  
2.48 Crore



### Infrastructural Capability



Own Storages MT Owned



Primary Processing Infrastructure NONE



Secondary Processing Infrastructure NONE



### Financial Capability



Financial linkage NONE



SFAC Equity Grant 10 Lakh

# Heera Seed Producer Company Limited



## About Us

Heera Seed Producer Company Limited was registered in 2015



## Location

Located in Icchawar block in Sehore district in Madhya Pradesh

## Contact Details



### CEO

Satish Solanki  
satishsolanky76@gmail.com  
8839245606



## Promoting Agency

SBSS Bhopal



## Number of Staff

6



## Managing Director


Rajkumari Rathore  
6261783712


## • CAPABILITY PROFILE •




### Institutional Capability

 Shareholders 640

 Equity 5.00 Lakh

 Tie ups & MoUs Nab kisan, Ananya finance

 Institutional linkages Nab kisan, Ananya finance




### Business Capability

 Type of Business Processing (Papad) Input, Seed Production

 Crops Wheat, Maize Soybean, Gram, Garlic & Onion

 License Food Uddam E-Nam


 3 Years Turnover 59.00 Lakh  
61.00 Lakh  
63.00 Lakh



### Infrastructural Capability

 Own Storages MT Rental

 Primary Processing Infrastructure Papad Machine

 Secondary Processing Infrastructure Papad Machine



### Financial Capability

 Financial linkage Nabkisan 15.00 Lakh  
Ananya Finance 55.00 lakh

 SFAC Equity Grant NA

# Varidhi Kisan Producer Company Limited



## About Us

Varidhi Kisan Producer Company Limited was registered in 2020



## Location

Located in Sehore block in Sehore district in baghelan Madhya Pradesh

## Contact Details



### CEO

Gabbar Singh Thakur  
erdaframer@gmail.com  
9575878253



## Promoting Agency

NABARD



## Number of Staff

4



### Chairman

Satish Malviya  
9755993378

## •CAPABILITY PROFILE •



### Institutional Capability

	Shareholders	519
	Equity	5.00 Lakh
	Tie ups & MoUs	YES
	Institutional linkages	ITC DEHAAT NCDEX



### Business Capability

	Type of Business	Seed Processing
	Crops	Wheat Soybean
	License	Mandi
	3 Years Turnover	NA 12.12 Lakh 24.00 Lakh



### Infrastructural Capability

	Own Storages MT	Rented Facility
	Primary Processing Infrastructure	NONE
	Secondary Processing Infrastructure	NONE



### Financial Capability

	Financial linkage	Nabkisan Finance Limited- Rs. 8 Lakhs
	SFAC Equity Grant	NA

# Paunar Agri Producer Company Limited



## About Us

Paunar Agri Producer Company Limited was registered in 2020



## Location

Located in Barghat block in Seoni district in Madhya Pradesh

## Contact Details



### CEO

Mayank Patel  
paunaragri@gmail.com  
8839245606



## Promoting Agency

Paryavaran jagratee  
Avam Gramin Siksha Vikas  
Sanstha(EAREDO)



## Number of Staff

1



## Managing Director

Raghuveer Singh  
Rangdale  
9174320409

## • CAPABILITY PROFILE •



### Institutional Capability

	Shareholders	510
	Equity	5.01 Lakh
	Tie ups & MoUs	NA
	Institutional linkages	NA



### Business Capability

	Type of Business	Inputs
	Crops	Paddy Rice All three
	License	Input Output Mandi
	3 Years Turnover	NA 1.68 Lakh 18.63 Lakh



### Infrastructural Capability

	Own Storages MT	Rented Facility
	Primary Processing Infrastructure	NONE
	Secondary Processing Infrastructure	NONE



### Financial Capability

	Financial linkage	NONE
	SFAC Equity Grant	NA



# Hardol Agriculture Marketing and Producer Company



## About Us

Hardol Agriculture Marketing and Producer Company was registered in 2006



## Location

Located in Shivpuri block in Shivpur district in baghelan Madhya Pradesh

## Contact Details



### CEO

Lokendra Singh Kirar  
lokendrahampco@gmail.com  
9926156344



## Promoting Agency

DPIP



## Number of Staff

2



### Chairman

Jairam Singh Yadav  
7089592520

## •CAPABILITY PROFILE •



### Institutional Capability



Shareholders 2163



Equity 3.02 Lakh



Tie ups & MoUs YES



Institutional linkages  
Kisanyard Reliance Dehaat



### Business Capability



Type of Business  
Inputs-Outputs Seed Production



Crops  
Wheat Gram Mustard



License  
All three Input Output Mandi



3 Years Turnover  
1.99 Crore  
1.99 Crore  
1.70 Crore



### Infrastructural Capability



Own Storages MT Owned



Primary Processing Infrastructure  
NONE



Secondary Processing Infrastructure  
NONE



### Financial Capability



Financial linkage NONE



SFAC Equity Grant NA

# Gautami Farmer Producer Company Limited



## About Us

Gautami Farmer Producer Company Limited was registered in 2021



## Location

Located in Badarwas block in Shivpuri district in Madhya Pradesh

## Contact Details



### CEO

Sanjeev Dhakad  
sanjeenverma10181108@gmail.com  
9755154604



## Promoting Agency

Madhya Pradesh State Rural Livelihood Mission



## Number of Staff

2



## Managing Director

Shikha Jatav  
9752656017

## • CAPABILITY PROFILE •



### Institutional Capability



Shareholders 400



Equity 4.00 Lakh



Tie ups & MoUs YES



Institutional linkages Output



### Business Capability



Type of Business Inputs & Seed Production



Crops Wheat, Gram Onion & Mustard



License Inputs



3 Years Turnover NA  
NA  
20.00 Lakh



### Infrastructural Capability



Own Storages MT Owned



Primary Processing Infrastructure NONE



Secondary Processing Infrastructure NONE



### Financial Capability



Financial linkage NONE



SFAC Equity Grant NA

# Samarjeet Farmer Producer Company Limited



## About Us

Samarjeet Farmer Producer Company Limited was registered in 2019



## Location

Located in Karera baghelan block in Shivpuri district in Madhya Pradesh

## Contact Details



### CEO

Rma Pal  
samarjeetlimited@gmail.com  
6263505376



## Promoting Agency

NABARD



## Number of Staff

6



### Chairman

Atar Singh Jatav  
9754603851

## • CAPABILITY PROFILE •



### Institutional Capability



Shareholders 1450



Equity 5.00 Lakh



Tie ups & MoUs YES



Institutional linkages S S Agro Industries



### Business Capability



Type of Business Input Business



Crops Chilly Powder  
Coriander  
Turmeric, Dalia  
Atta, Peanut



License Seed Fertilizer  
FSSAI



3 Years Turnover 13.25 Lakh  
21.52 Lakh  
31.40 Lakh



### Infrastructural Capability



Own Storages MT Owned



Primary Processing Infrastructure Grader  
Cleaner  
Cutter  
Gravy Machine



Secondary Processing Infrastructure NONE



### Financial Capability



Financial linkage Nabkisan Finance Limited-Rs 10 Lakhs



SFAC Equity Grant Applied

# Shivpuri Kisan Utpadak Producer Company Limited



## About Us

Shivpuri Kisan Utpadak Producer Company Limited was registered in 2021



## Location

Located in Shivpuri block in Shivpuri district in Madhya Pradesh

## Contact Details



### CEO

Ramveer Rawat  
rawatramveer02@gmail.com  
8878367202



## Promoting Agency

NABARD



## Number of Staff

2



### Chairman

Bharat Singh Rawat  
9425765790

## • CAPABILITY PROFILE •



### Institutional Capability

	Shareholders	300
	Equity	6.00 Lakh
	Tie ups & MoUs	NA
	Institutional linkages	NA



### Business Capability

	Type of Business	Trading Input
	Crops	NONE
	License	Applied
	3 Years Turnover	NA NA NA



### Infrastructural Capability

	Own Storages MT	Rented Facility
	Primary Processing Infrastructure	NONE
	Secondary Processing Infrastructure	NONE



### Financial Capability

	Financial linkage	NONE
	SFAC Equity Grant	NA



# Amritdhara Agro Farmers Producer Company Limited



## About Us

Amritdhara agro farmers producer company Limited was registered in 2021



## Location

Located in Narwar baghelan block to Shivpuri district in Madhya Pradesh

## Contact Details



### CEO

Rakesh Jatav  
mjss2025rath@gmail.com  
6260688959



## Promoting Agency

Manv Jagran shewa sanshthan Narwar Shivpuri



## Number of Staff

6



## Managing Director

Bharat Lodhi Sharma  
8840992276

## •CAPABILITY PROFILE •



### Institutional Capability

	Shareholders	500
	Equity	5.00 Lakh
	Tie ups & MoUs	NO
	Institutional linkages	NO



### Business Capability

	Type of Business	Milk Processing Inputs, Output:
	Crops	Paddy, Wheat Mustard, Groundnut, Gram, Urad Moong, Makka Green Pea
	License	Input, Seed Fertilizer Pesticide
	3 Years Turnover	NA NA 8.37 Lakh



### Infrastructural Capability

	Own Storages MT	rented
	Primary Processing Infrastructure	(cleaner) Milk Testing
	Secondary Processing Infrastructure	(cleaner) Milk Testing



### Financial Capability

	Financial linkage	Rs. 10,000 for warehouse
	SFAC Equity Grant	NA

# Sontat Producer Company Limited



## About Us

Sontat Producer Company Limited was registered in 2016



## Location

Located in Sihawal block in Sidhi district in Madhya Pradesh

## Contact Details



### CEO

Neelesh Singh  
spclsidhi@gmail.com  
7566245464



## Promoting Agency

NABARD



## Number of Staff

8



## Chairman

Ramji Diwedi  
9589032819

## • CAPABILITY PROFILE •



### Institutional Capability



Shareholders 1832



Equity 10.0 Lakh



Tie ups & MoUs NA



Institutional linkages NA



### Business Capability



Type of Business Inputs, Trading



Crops NONE



License Mandi



3 Years Turnover  
72.00 Lakh  
67.00 Lakh  
1.04 Crore



### Infrastructural Capability



Own Storages MT Rented Facility



Primary Processing Infrastructure  
Dal Processing Machine, Seed Grading Plant



Secondary Processing Infrastructure NONE



### Financial Capability



Financial linkage Samuunnati Finance Limited-Rs. 20 Lakhs



SFAC Equity Grant NA

# Bagwani Fasal Utpadan Vipnan Avam Prasanshkaran Sahkari Samiti Maryadit, Khuteli



## About Us

Bagwani Fasal Utpadan Vipnan avam Prasanshkaran Sahkari Samiti Maryadit, Khuteli was registered in 2020



## Location

Located in Shiawal baghelan block in Sidhi district Madhya Pradesh

## Contact Details



### CEO

Neeraj Kumar Dwivedi  
neerajdwivedi171@gmail.com  
9685954654



## Promoting Agency

NONE



## Number of Staff

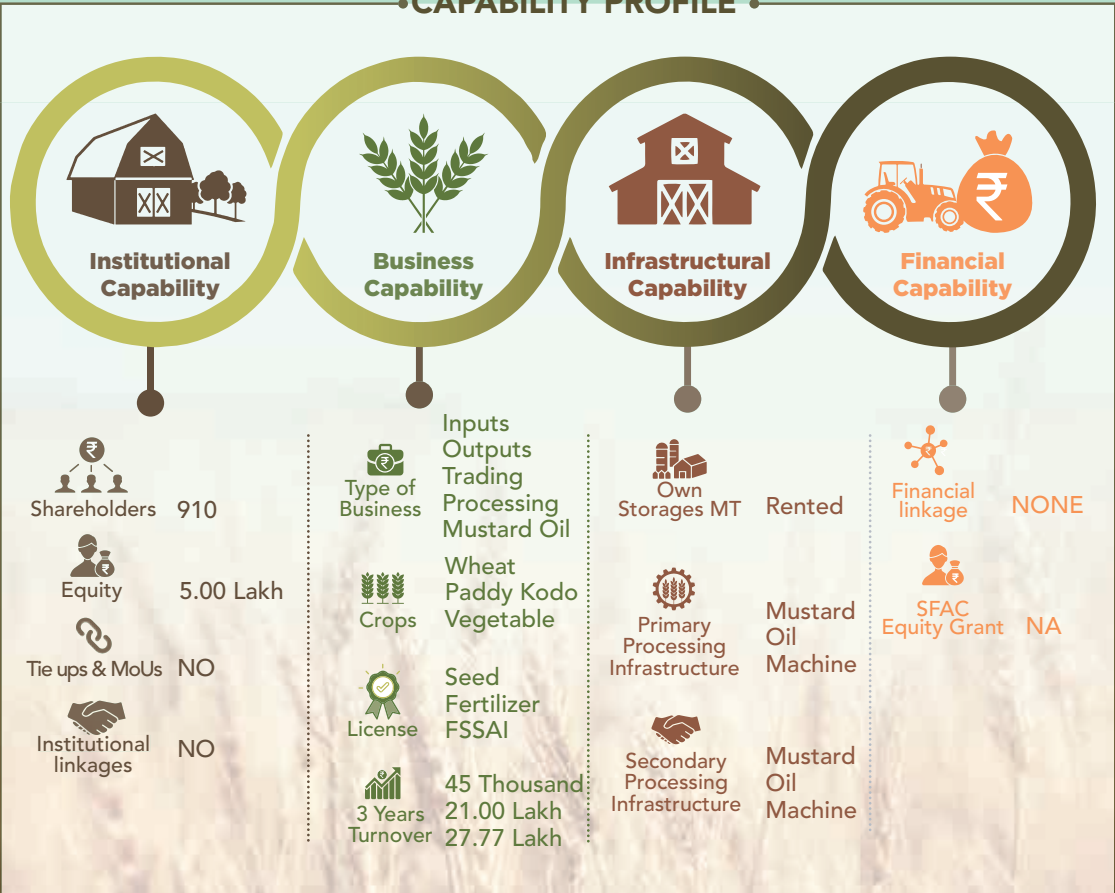
5



## Managing Director

Jitendra Kumar Diwadi  
9109546840

## •CAPABILITY PROFILE •



# Mahan Mahila Kisan Crop Producer Company Limited



## About Us

Mahan Mahila Kisan Crop Producer Company Limited was registered in 2014



## Location

Located in Devsar block in Singrauli district in Madhya Pradesh

## Contact Details



### CEO

Santosh Panika  
mmkpcld@gmail.com  
7697150378



## Promoting Agency

PRADAN



## Number of Staff

3



### Chairman


Ramji Diwedi  
9589032819

## • CAPABILITY PROFILE •



### Institutional Capability

 Shareholders 728

 Equity 7.28 Lakh

 Tie ups & MoUs NA


 Institutional linkages NA



### Business Capability

 Type of Business Inputs & Outputs

 Crops Wheat, Paddy, Maize, Region Pea

 License All three Input Output Mandi


 3 Years Turnover 54.48 Lakh  
2.38 Crore  
45.84 Lakh



### Infrastructural Capability

 Own Storages MT Owned

 Primary Processing Infrastructure NONE

 Secondary Processing Infrastructure NONE



### Financial Capability

 Financial linkage NONE

 SFAC Equity Grant NA



# Singdev Mahila Kisan Producer Company Limited



## About Us

Singdev Mahila Kisan Producer Company Limited was registered in 2020



## Location

Located in Singrauli district Madhya Pradesh



## Contact Details

**CEO**  
Nilesh Kanekar  
7030449285



## Promoting Agency

Tata Trust & FDRVC  
NRETP SRLM



## Number of Staff

16




**Chairman**  
Vimla Prajapati

## CAPABILITY PROFILE




### Institutional Capability

  
Shareholders 3978

  
Equity 1.50 Lakh

  
Tie ups & MoUs NO


  
Institutional linkages Output



### Business Capability

  
Type of Business Output

  
Crops Pigeon Pea

  
License Both Input & Mandi

  
3 Years Turnover NA  
11.60 Lakh  
1.02 Crore



### Infrastructural Capability

  
Own Storages MT Rented

  
Primary Processing Infrastructure NONE

  
Secondary Processing Infrastructure NONE



### Financial Capability

  
Financial linkage NONE

  
SFAC Equity Grant NA

# Urjadhani Farmer Producer Company Limited



## About Us

Urjadhani Farmer Producer Company Limited was registered in 2022



## Location

Located in Baidhan block in Singrauli district in Madhya Pradesh

## Contact Details



### CEO

Avinash Jaiswal  
avinashjaiswal355@gmail.com  
9977473055



## Promoting Agency

PRADAN



## Number of Staff

2



### Chairman

Satish Kumar Jaiswal  
9669505340

## • CAPABILITY PROFILE •



### Institutional Capability

Shareholders 300

Equity 3.90 Lakh

Tie ups & MoUs NA

Institutional linkages NA



### Business Capability

Type of Business Trading

Crops Kodo, Kutki Paddy, Wheat Mustard Pea

License Mandi

3 Years Turnover 2.50 Lakh  
NA  
NA



### Infrastructural Capability

Own Storages MT  
Rented Facility

Primary Processing Infrastructure NONE

Secondary Processing Infrastructure NONE



### Financial Capability

Financial linkage NONE

SFAC Equity Grant NA

# Yudhishtir Agro Farmer Producer Company Limited



## About Us

Yudhishtir Agro Farmer Producer Company Limited was registered in 2022



## Location

Located in Chitrangi block in Singrauli district in Madhya Pradesh



## CEO

Radhe Kant  
radhekantbais@gmail.com  
9098878182



## Promoting Agency

NABARD



## Number of Staff

2



## Chairman

Prem Sagar Bais  
9630262166

## CAPABILITY PROFILE



### Institutional Capability

	Shareholders	210
	Equity	3.0 Lakh
	Tie ups & MoUs	NO
	Institutional linkages	NO



### Business Capability

	Type of Business	Seed Fertilizer Pesticides
	Crops	NA
	License	Input(Seed, Fertilizer, Pesticides, Mandi)
	3 Years Turnover	NA NA NA



### Infrastructural Capability

	Own Storages MT	Rented
	Primary Processing Infrastructure	NONE
	Secondary Processing Infrastructure	NONE



### Financial Capability

	Financial linkage	NONE
	SFAC Equity Grant	NA

# Digoda Crop Producer Company Limited



## About Us

Digoda Crop Producer Company Limited was registered in 2010



## Location

Located in Jatara block in Tikamgarh district in Madhya Pradesh

## Contact Details



### CEO

Bhagwat Raikwar  
bhagwatraikwar2013@gmail.com  
8770744112



## Promoting Agency

ASA



## Number of Staff

2



## Chairman

Janak Raja  
7999466985

## CAPABILITY PROFILE



### Institutional Capability

Shareholders 310

Equity 1.68Lakh

Tie ups & MoUs ITC, Samunnati Madhya Bharat Consortium

Institutional linkages Output



### Business Capability

Inputs-Outputs Seed Production  
Type of Business

Crops Wheat Urad, Onion, Mustard Pea

License All three Input Output Mandi

3 Years Turnover 5.34 Lakh  
2.35 Lakh  
2.91 Lakh



### Infrastructural Capability

Own Storages MT Owned

Primary Processing Infrastructure NONE

Secondary Processing Infrastructure NONE



### Financial Capability

Financial linkage NONE

SFAC Equity Grant NA



# Jatara Mahila Kisan Producer Company Limited



## About Us

Jatara Mahila Kisan Producer Company Limited was registered in 2021



## Location

Located in Jatara block in Tikamgarh district in Madhya Pradesh

## Contact Details



### CEO

Nitesh  
mbc.mpjatarafpo@gmail.com  
9691546309



## Promoting Agency

Madhya Pradesh State Rural Livelihood Mission



## Number of Staff

2



### Chairman

Sunita raja bundela  
9770577306

## • CAPABILITY PROFILE •



# Aarudhara Farmer Producer Company Limited



## About Us

Aarudhara Farmer Producer Company Limited was registered in 2020



## Location

Located in Mahidpur block in Ujjain district in Madhya Pradesh

## Contact Details



### CEO

Jai Prakash Thopte  
jaithopte@gmail.com  
9179173887



## Promoting Agency

SELF



## Number of Staff

3



### Chairman

Kelesh Malvi  
9630285439

## • CAPABILITY PROFILE •



### Institutional Capability

Shareholders 726

Equity 6.80 Lakh

Tie ups & MoUs ITC

Institutional linkages ITC



### Business Capability

Type of Business Inputs

Crops Soybean Wheat

License Seed Pesticide All licence

3 Years Turnover NA 7.35 Lakh 17.0 Lakh



### Infrastructural Capability

Own Storages MT Owned

Primary Processing Infrastructure NONE

Secondary Processing Infrastructure NONE



### Financial Capability

Financial linkage NABARD RS.3 Lakhs

SEAC Equity Grant NA

# Sironj crop Producer Company Private Limited



## About Us

Sironj Crop Producer Company Private Limited was registered in 2005



## Location

Located in Sironj block in Vidisha district in Madhya Pradesh

## Contact Details



### CEO

Ashok Tiwari  
seed.scpcl@gmail.com  
9584627983



## Promoting Agency

DPIP/PRADAN



## Number of Staff

3



## Chairman

Laxman Singh  
8966863480

## •CAPABILITY PROFILE •



### Institutional Capability

	Shareholders	1910
	Equity	2.00 Lakh
	Tie ups & MoUs	YES
	Institutional linkages	ITC



### Business Capability

	Type of Business	Inputs Outputs-Seed Production Processing
	Crops	Mustard Gram Lentil,Wheat
	License	All three Input Output Mandi
	3 Years Turnover	1.43 Crore 1.18 Crore 4.56 Crore



### Infrastructural Capability

	Own Storages MT	Owned
	Primary Processing Infrastructure	NONE
	Secondary Processing Infrastructure	NONE



### Financial Capability

	Financial linkage	IDFC Rs. 25 Lakhs
	SFAC Equity Grant	NA

# Bhagyauday Mahila Kisaan Producer Company Limited



## About Us

Bhagyauday Mahila Kisaan Producer Company Limited was registered on 2020



## Location

Located in Gyaraspur block in Vidisha district in Madhya Pradesh

## Contact Details



### CEO

Ajit Varma  
dmkpcl@gmail.com  
8176818369



## Promoting Agency

Madhya Pradesh State Rural Livelihood Mission



## Number of Staff

2



## Chairman

Seema Yadav  
9691247552

## • CAPABILITY PROFILE •



### Institutional Capability



Shareholders 315



Equity 3.15 Lakh



Tie ups & MoUs



Institutional linkages

Output



### Business Capability



Type of Business NONE



Crops Wheat Paddy Soybean



License FSSAI



3 Years Turnover 1.43 Crore 1.18 Crore 80.41 Lakh



### Infrastructural Capability



Own Storages MT Rented



Primary Processing Infrastructure NONE



Secondary Processing Infrastructure NONE



### Financial Capability



Financial linkage NONE



SFAC Equity Grant NA



## List of Other FPOs

S. No	Name of FPO	Date of Registration	District	Block	Contact Person	Phone	Email
1	Achanakapur Gram Gramin Dharohar Farmer Producers Company Limited	29/10/2016	Balaghat	Birsa	Mr. Jitendra Mhanand	8349487223	jmahanand34@gmail.com
2	Adarsh Farmers Producer Company Limited	12/05/2017	Guna	Guna	Devendra Sahu	7770935486	adarshfarmerspl123@gmail.com
3	Amanganj Krishak Producer Company Limited	02/06/2016	Panna	Panna	Mr. Mukesh Upadhyaya	9424064357	mukeshupadhyay319@gmail.com
4	Anshik India Producer Company Limited	30/09/2016	Gwalior	Gwalior	Mr. Imran Khan	7987353162	anshikindia.fpo@gmail.com
5	Antariksha India Producer Company Limited	03/10/2016	Datia	Datia	Mr. Akash Jatav	7898712955	antarikshaindia.fpo@gmail.com
6	Avantika Aatam Nirbhar Krashak Producer Company Limited	07/10/2010	Agar Malwa	Agar & Badod	Mr. Nand Kishor Yadav	9752740940	avantikapc.agar@gmail.com
7	Bada Malehra Krishak Producer Company Limited	23/02/2016	Chhatarpur	Bada Malhera	Mr. Mukesh Upadhyaya	9424064357	mukeshupadhyay319@gmail.com
8	Bagli Krishak Procducer Company Limited	23/10/2018	Dewas	Bagli	Mr. Ajay Pal Singh	8839226193	gvrijhabua@gmail.com
9	Bajna Mahila Farmer Producer Company Limited	16/12/2016	Ratlam	Sailana	Mr. Yogesh	7869957626	yogesh@asabhopal.org
10	Bal Ganga Farmer Producer Company Limited	13/04/2015	Mandla	Ghughri	Mr. Rakesh Jhariya	9424360816	rakeshcard007@gmail.com
11	Balwadi Farmers Producer Company Limited	02/06/2015	Barwani	Sendhwa	Mr. Vimlesh Yadav	9755745518	balwadifpc@gmail.com
12	Bandhavgarh Krishak Producer Company Limited	07/01/2015	Umaria	Umaria	Mr. Ramveer Singh Rajput	7869954378	shahdol@asabhopal.org
13	Bankhedi Balram Farmers Producer Company Limited	17/08/2016	Hoshangabad	Bankhedi	Mr. Gaurav Vats	8377904962	gaurav@isapindia.org
14	Barna Crop Producer Company Limited	12/08/2016	Raisen	Sultanpur	Narayan singh Rajput	9893484052	narayansinghrajput06@gmail.com

S. No	Name of FPO	Date of Registration	District	Block	Contact Person	Phone	Email
15	Buxwaha Krishak Producer Company Limited	27/01/2016	Buxwaha (Chhatarpur)	Buxwaha	Mr. Mukesh Upadhaya	9424064357	mukeshupadhayay319@gmail.com
16	Bhairav Kisan Nath Farm Producer Company Limited	09/04/2015	Rewa	Gurh	Chairman	9981695157	bknfpc.ltd@gmail.com
17	Bhimkund agriculture Farmers Producer Company Limited	06/02/2016	Chhatarpur	Chhatarpur	Sanjay Singh	9516614028	haritika97@rediffmail.com
18	Bhumija Farmers Producer Company Limited	29/09/2016	Chhindwara	Chand	Ramavtar Pandey	9993176758	bhumijafpcld2016@gmail.com
19	Bijasani Krushi Vikas Farmer Producer Company Limited	23/06/2020	Barwani	Barwani	Mr. Vipin Patel	6263240883	bijasanfpo@gmail.com
20	Bindhya Narmada Kissan Producer Company Limited	05/09/2016	Raisen	Silwani	Hakam Singh Meena	9630368029	hakammeena@gmail.com
21	Birsa Gramin Dharohar Farmer Producers Company Limited	08/12/2016	Balaghat	Birsa	Mr. Yudhithir Kumar	8462011788	birsagdfpcl@gmail.com
22	Birsinghpur Farmer Producer Company Limited	05/01/2016	Umaria	Sohagapur	Mr. Devendra Singh Patel	7999943017	shahdol@asabhopal.org
23	Burhar Kisan Producer Company Limited	05/01/2015	Shahdol	Shohagpur	Mr. Ramveer Singh Rajput	7869954378	shahdol@asabhopal.org
24	Chand Farmer Producer Company Ltd	18/08/2014	Chhindwara	Chaurai	Mr. Shivpal	7879028527	Shivpalyaduwanshi185@gmail.com
25	Chichali Kisan Producer Company Ltd.	30/04/2012	Narsinghpur	Gadarwara	Ms Seema Patel	9179985969	patelseema488@gmail.com
26	Cofe Producer Company Limited	19/11/2015	Chhindwara	Mohkhed	Mr. Arvind Kumar	8989799496	arvindkumar@srijanindia.org
27	Dada Darbar Producer Company Ltd.	09/09/2011	Narsinghpur	Gadarwara	Mr. Yogesh	7869957626	yogesh@asabhopal.org
28	Dedtalai Farmer Producer Company Limited	11/07/2018	Burhanpur	Khakner	Mr. Shreeram Yadav .	7745991539	dfpclkhaknar@gmail.com
29	Denva Agro Farming Producer Company Limited	17/02/2016	Chhindwara	Tamia	Sanjay Uikey	7241107108/ 9424679938	denvaafpclnct@gmail.com

## List of Other FPOs

S. No	Name of FPO	Date of Registration	District	Block	Contact Person	Phone	Email
30	Devendra Farmer Producer Company Limited	29/12/2014	Panna	Panna	Mr. Devendra Nagar	07732-272247	DfpcL.Devendranagar@gmail.com
31	Dindori Kisan Producer Company	27/04/2013	Dindori	Dindori	Mr.Sharad Mishra	7869957622	mandla@asabhopal.org
32	Freeds Farmers Producer Company Limited	05/05/2016	Katni	Bahoribandh	SHWETA MISHRA	7354870799	reeds.vtp@gmail.com
33	Gavinath Krishak Producer Company Limited	23/03/2015	Satna	Unchehra	Shri. Malti Singh	9827672918	singhmalti.iffdc@gamil.com
34	Ghodadongri Crop Producer Company Limited	28/01/2015	Betul	Betul	Sunil Dhote	9993767492	dhote10@gmail.com
35	Gohad Crop Producer Company Limited	05/12/2018	Bhind	Gohad	Mrs. Bali Gehlot	9109943399	fpogcpcgohad@gmail.com
36	Gondwana Farmers Producer Company Limited	17/06/2016	Betul	Bhainsdehi	Brajkishore Dehariya	9407369315	gfpcInct@gmail.com
37	Gyarashpur Agriculture Farmers Producer Company Limited	18/07/2016	Vidisha	Gyarspur	Rajkumar Vishkarama	9753594490	haritika97@rediffmail.com
38	Haribhumi Farmers Producer Company Limited	19/09/2016	Chhindwara	Chand	Deepak sahu	9584157827	haribhoomifpcL2016@gmail.com
39	Hoshangabad Krishi Chetna Producer Company Limited	07/07/2015	Hoshangabad	Hoshangabad	Mr. Avnish Tiwari	8349805920	avnishtiwari2015@gmail.com
40	Jaithari Farmer Producer Company Limited	16/01/2015	Anuppur	Anuppur	Mr. Ramveer Singh Rajput	7869954378	shahdol@asabhopal.org
41	Jamuniya Gramin Dharohar Farmer Producers Company Limited	13/12/2016	Balaghat	Birsa	Mr. Jitendra Mhanand	8462011720	jmahanand34@gmail.com
42	Jatara Krishak Chetna Producer Company Limited	06/07/2015	Tikamgarh	Jatara	Mr. Brij Bhushan Pathak	9752850850	pathak.brijbhushan@gmail.com
43	Jatashankar Farmer Producer Company Ltd	14/10/2014	Panna	Gunnor	Mr. Pramel	8103382233	Pramel@Vrutti.Org

S. No	Name of FPO	Date of Registration	District	Block	Contact Person	Phone	Email
44	Jay Shri Bhilat Dev Krushi Vikas Farmer Producer Company Limited	19/06/2020	Barwani	Sendhwa	Ms Salu Badole	9977348935	jayshreebhilatdevfpo@gmail.com
45	Jhamul Gramin Dharohar Farmer Producers Company Limited	15/12/2016	Balaghat	Birsa	Mr. Ramesh Pillai	8462011741	jhamulgdfpcl@gmail.com
46	Johila Tribal Farmer Producer Company Limited	13/12/2014	Anuppur	Piushprajgarh	Mr. Ramveer Singh Rajput	7869954378	shahdol@asabhopal.org
47	Jyotsana India Producer Company Limited	03/10/2016	Datia	Datia	Mrs. Divya Verma	9575609090	jyotsanaindia.fpo@gmail.com
48	Kakanwani Mahila Kisan Producer Company Limited	28/01/2015	Jhabua	Thandla	Mr. Mohammad Rashid Sheikh	7024101166	petlawad@asabhopal.org
49	Kalisindh Farmer Producer Company Limited	27/10/2015	Ujjain	Tarana	Mr. Manohar Tomar	9893266930	tomarmanohar@yahoo.com
50	Kamtanath Ji Krishak Producer Company	21/03/2013	Satna	Kotar	Dr. Kamendra Singh	9752712031	kamlendra884@gmail.com
51	Kapildhara Kisan Producer Company Limited	08/10/2015	Anuppur	Kotma	Mr. Rajjan Prasad	9407325453 8319327082	shahdol@asabhopal.org
52	Karmath Kisan Producer Company Limited	14/12/2016	Dhar	Dhar	Sachin Patidar	8120415651	sachi8484patidar@gmail.com
53	Khalwa Farmer Producer Company Limited	14/08/2017	Khandwa (East Nimar)	Khalwa	Mr. Firoz Khan	6269636409	kfpcl.khalwa@gmail.com
54	Khedapati Kisan Producer Company Limited	27/06/2017	Shivpuri	Pohri	VPSINGH Sikanwar	9977934114	khedapatifarmer脾123@gmail.com
55	Khirkiya Krishi Chetna Producer Company Limited	13/11/2016	Harda	Khirkiya	Mr. Ramesh Sharma	9754526508	rameshsharma25160@gmail.com
56	Khurai Krishak Producer Company Limited	07/11/2015	Sagar	Khurai	Shri. Malti Singh	9827672918	singhmalti.iffdc@gamil.com
57	Krashak Agro Industries Producer Company Limited	12/01/2015	Damoh	Batiyagarh	Dwarka Lodhi	9981818619	krashakagro15@gmail.com



## List of Other FPOs

S. No	Name of FPO	Date of Registration	District	Block	Contact Person	Phone	Email
58	Kundanpur Adiwasi Kisan Producer Company Limited	29/01/2015	Jhabua	Pitol	Mr. Prakash Jamuiya	9425969634	jhabua@asabhopal.org
59	Mahakaushal Progressive Farmers Self Reliant Producer Company Limited	10/06/2010	Seoni	Seoni	Chairman	9752740940	mpcl.seoni@Gmail.com
60	Makdone Farmer Producer Company Limited	18/01/2016	Ujjain	Tarana	Shree Manohar Tomar	8305795108	tomarmanohar@yahoo.com
61	Mehgaon Crop Producer Company Limited	26/07/2016	Bhind	Mehgoun	Narendra Bansal	9753151854	mcpl2016@gmail.com
62	Mekalsuta Krishi Chetna Producer Company Limited	01/12/2016	Harda	Harda	Mr. Neelesh Dubey	9893325688	neelmcm@gmail.com
63	Mhow Agriculture Producer Company Limited	31/03/2014	Indore	Mhow	Mr. Baijnath Patidar	7898523831	mhowfpc.igs@gmail.com
64	Nalchha Farmer Producer Company Limited	05/08/2016	Dhar	Nalchha	Kamal Dewal	8827440726	kamaldcard@gmail.com
65	Nanpur Adiwasi Kisan Producer Company Limited	29/01/2015	Alirajpur	Alirajpur	Mr. Vikash Pandey	7869801101	jhabua@asabhopal.org
66	Narayanganj Krishak Producer Company Limited	01/03/2016	Mandla	Narayanganj	Mr. Mukesh Upadhyaya	9424064357	mukeshupadhyay319@gmail.com
67	Narmada Self Reliant Farmers Producer Company Limited	25/01/2011	Mandla	Mandla	Chairman	7389905599, 6266412980	pcnarmada.mandla@gmail.com
68	Nasrullaganj Krishak Chetna Producer Company Limited	08/12/2016	Sehore	Narsullaganj	Mr. R R Singh	9425300846	singh.raghuraj@gmail.com
69	Nimadanchal Agriculture Farmer Producer Company Limited	25/11/2016	Khandwa (East Nimar)	Pandhana	Mr.Himanshu Yadav	7999788335	pandhananfpc@gmail.com
70	Niwali Farmer Producer Company Limited	15/12/2015	Barwani	Niwali	Shantilal Chouhan	9424056709	nfpc.niwali@gmail.com
71	Orchha Farmer Producer Company Ltd	10/09/2014	Tikamgarh	Niwari	Mr. Pramel	8103382233	Pramel@Vrutti.Org

S. No	Name of FPO	Date of Registration	District	Block	Contact Person	Phone	Email
72	Pandhana Pashu palak Producer Company Limited	02/04/2016	Khandwa (East Nimar)	Pandhana	Mr. Kalu Singh Muwel	6267329048	pandhanappcl.pandhana@gmail.com
73	Pati Mahila Farmer Producer Company Limited	09/02/2015	Barwani	Pali	Mr. Pankaj Sharma	7869957603	rajpur@asabhopal.org
74	Pipariya Jay Mahadev Kisan Producer Company Limited	29/05/2017	Hoshangabad	Pipariya	Shankar Lal Raghuvanshi	9406930002	pjmkpcl.pipariya@gmail.com
75	Pitambara Farmer Producer Company Limited	10/05/2016	Datia	Datia	Brajesh Singh Chouhan	9425664863	pragatipath2001@gmail.com
76	Prashantee India Producer Company Limited	27/09/2016	Gwalior	Gwalior	Ms. Neilofar Khan	9131046907	prashantiindia.fpo@gmail.com
77	Rani Roopmati Farmers Producer Company Limited	16/02/2016	Dhar	Dhar	Gopal Yadav	9644484284	raniroopmatifpc2016@gmail.com
78	Ratlam Adiwasi Farmer Producer Company Ltd.	22/09/2012	Ratlam	Ratlam	Shri. Bherulal Rathore	8889385430	rakpclrati@gmail.com
79	Rithi Agriculture Producer Company Limited	28/10/2015	Katni	Rithi	Umesh Suryawanshi	9893621868	umesh00164@gmail.com
80	Samardhhi Krishak Producer Company Limited	21/11/2019	Dewas	Khategoun	Dr. Varan Singh	9893604850	drvaransingh@gmail.com
81	Sampurna Women Crop Producer Company Limited	19/02/2014	Betul	Shahpur	Mr. Rajesh Yadav	9406930108	Rabindranath@Pradan.Net
82	Satpura Self Reliant Farmer's Producer Company Limited	17/05/2010	Chhindwara	Junnardeo	Mr. Vinod Vishwakarma	9009598863	ssrfpcl@gmail.com
83	Sausar Farmer Producer Company Limited	14/07/2014	Chhindwara	Sausar	Mr. Ashish Pal	7725016404	Sfpcl.Sausar@Gmail.com
84	Shivgarh Mahila Farmer Producer Company Limited	25/07/2017	Ratlam	Sailana	Mr. Yogesh	7869957626	yogesh@asabhopal.org
85	Sihawal Farmer Producer Company Limited	22/09/2014	Sidhi	Kuchwani	Mr. Tanmay	7024799107	Tanmay.Vrutti@gmail.com
86	Sindh Crop Producer Company Limited	17/06/2016	Gwalior	Dabra	Mr.Sonu Baghel	7697890979	scpcl2016@gmail.com

## List of Other FPOs

S. No	Name of FPO	Date of Registration	District	Block	Contact Person	Phone	Email
87	Sohagpur Namami Narmade Kisan Producer Company Limited	26/12/2016	Hoshangabad	Sohagpur	Shivkumar Patel	9826421770	snnkpcl.sohagpur@gmail.com
88	Sohawal Krishak Producer Company Limited	20/06/2016	Satna	Satna	Shri. Malti Singh	9827672918	singhmalti.iffdc@gamil.com
89	Somya Farmers Producer Company Limited	15/05/2017	Shivpuri	Shivpuri	Raghuveer Rawat	9752827362	somyafarmerspl123@gmail.com
90	Sonanchal Kisan Producer Company Limited	09/04/2015	Sidhi	Rampur Naikin	Mr. Gaurav Vats	8377904962	gaurav@isapindia.org
91	Tapti Laxmi Pashu Palak Producer Company Limited	06/10/2016	Burhanpur	Khakner	Mr. Parkash Parjapati	9165238947	taptilaxmi.dedtalai@gmail. Com
92	Tekri Sarkar Crop Producer Company Ltd.	13/02/2013	Guna	Guna	Shri. Rajjak Sonu	7542227105	tekrisarkar.producercompany@gmail.com
93	Thikri Farmer Producer Company Limited	08/08/2013	Barwani	Thikri	Mr. Pankaj Sharma	7869957603	rajpur@asabhopal.org
94	Tirila Farmer Producer Company Limited	10/08/2016	Dhar	Tirila	Nandram dawer	9399426455	nandramdawer58@gmail.com
95	Udaigarh Aadiwasi Kisan Producer Company Limited	26/02/2015	Alirajpur	Udaigarh	Mr. Vikash Pandey	7869801101	jhabua@asabhopal.org
96	Ultimate Farmers Producer Company Limited	09/06/2016	Guna	Shivpuri	Mr. Gaurav Vats	8377904962	gaurav@isapindia.org
97	V.B.M. Farmer Producer Company Limited	19/12/2016	Dhar	Dhar	Kamal Dewal	8827440726	kamaldcard@gmail.com
98	Vishvamangal Krishak Producer Company Limited	05/06/2018	Indore	Depalpur	Mr. Ajay Pal Singh	8839226193	gvjhabua@gmail.com
99	AJVIKA Orange Producer Company Ltd.	09/01/2021	Agar Malwa	Agar Malwa	Hement Ramawat	7222992843	eapcl2020@gmail.com
100	Madhya Pradesh Women Poultry Producer Company (MPWPCL) & associated Producer collectives	02/05/2006	Bhopal	Bhopal	Office	7552476188	info@mpwpcl.org

# Supported by



## Corporate Office

NABARD, Plot No. C-24,  
G Block, BKC, Bandra (East)  
Mumbai-400051  
Ph:022-26539243/26539241  
e-mail:ho@nabsanrakshan.org

**NABSanrakshan Trustee Private Limited**, A wholly owned Subsidiary of NABARD  
Building Trust for Rural Prosperity

- › Offers credit guarantee through the Trusts under its Trusteeship
- › Two sovereign Credit Guarantee Schemes offered:
  - › FPO Financing
  - › Under Animal Husbandry Infrastructure Development Fund (AHIDF)
- › Credit guarantee given against the credit offered by the Eligible Lending Institutions registered under the Scheme



## NABKISAN FINANCE Limited

A Subsidiary of NABARD

- › Largest lender in FPO space
- › Present in 20+ States
- › 1400+ FPOs credit linked
- › Collateral free lending at affordable rates
- › Financing FPOs through
  - › Working Capital
  - › Term loan
  - › Pledge Financing (eNWR)
- › Term lending for Corporates/ NBFCs/ MFIs
- › Soft loans for Agri Startups

### Corporate Office

C/o NABARD, Mumbai  
✉ e-mail:corporate@nabkisan.org  
☎ Phone:022- 26539620/26539415  
🌐 www.nabkisan.org

### Registered Office

C/o NABARD, Tamil Nadu RO, Chennai  
✉ e-mail:finance@nabkisan.org  
☎ Phone:044- 28270138/28304658  
🌐 Web-portal:krishimanch.co.in



## NABFOUNDATION

Leveraging the power of convergence

NABFOUNDATION is a wholly owned, not for profit, subsidiary of NABARD, established under Sec 8 of Companies Act, 2013. The organization draws its strength and experience from the thousands of development projects grounded by its parent body, NABARD, in multiple domains over nearly last four decades.

### What does NABFOUNDATION want from you ?

#### IF YOU ARE AN INDIVIDUAL

Reach out to us with your ideas about development projects which you believe need to be implemented. We really look forward to your fresh ideas

#### IF YOU ARE A CSR UNIT

Of a corporate and believe that there is a scope for collaborating with us to have access to the vast network of resources of NABARD in a structured manner, just give us a call

#### IF YOU ARE A CIVIL SOCIETY ORGANIZATION/ NGO

With an idea whose time you think has come and have not been able to find willing partners, reach out to us

#### IF YOU ARE WITH THE GOVERNMENT

And believe that there is a need for reimagining implementation of your Central or State government projects, allow us to be a part of your vision



My Pad | My Right  
• Health • Cleanliness • Livelihood

Registered Office: NABARD, 2nd Floor, B Wing, Plot No. C-24, G Block, BKC, Bandra (East), Mumbai-400051

✉ e-mail:nabfoundation@nabard.org

☎ Phone: 91-22-2653 9404/9054

🌐 www.nabfoundation.in







Supported by

